

the blue experience
2024 / 2025



the protective Packagist ...

Emba-Protec

the protective Packagist ...



Welcome to Emba-Protec!

The family-run company was founded in 2003 and after 20 years can look back on an impressive growth. As the market leader in Europe for protective packaging, we work exclusively with packaging solutions for sensitive or logistically demanding shipment products of our customers.

As your partner we produce and deliver bespoke protective packaging specially designed for your delicate products. In our headquarters in east-westphalian Bad Oeynhausen, we combine R&D, production and logistics under one roof. With modern machines, a lean administration and a highly qualified team, we deliver bespoke packaging solutions tailor-made for your needs.

Our standard range, comprising more than 500 sizes, is the **market's largest**. You have the choice of film qualities PE and PU and an antistatic version. This standard product range is available from stock – even in small quantities.

Although you can cover a lot with this, we can also design your own bespoke packaging. Whether for small or large quantities. **Over 1,000 new developments per year** are realized by our R&D team using the latest CAD systems. Together with you, not only are all possible storage and transportation conditions of your product taken into consideration, but also the entire work process. And upon request, drop tests in accordance with the UPS standard (DIN ISO 2248) or G-value tests can also be carried out by our R&D team.

Emba-Protec

the protective Packagist ...



Once the design of your packaging has been created and approved by you, there are two options available. An industrial plotter is now available for trial or one-off orders of up to 1,000 units. Without tooling costs and in the shortest possible time we can deliver your packaging. Or you can order your desired quantity as with our new in-house 28-meter high-performance die-cutter, we can also produce very large runs.

With more than 16.000 square meters of storage and production space and a modern high-bay warehouse with more than 10.000 spaces, we guarantee a just-in-time delivery of your packaging. When you place a contract order, no matter whether the item is a standard size or a packaging specially designed for you, we produce higher volumes, pass-on the price advantage to you and arrange for storage. Up to this point, we bear the cost and you only pay when your packaging leaves our premises. You just have to order call-off quantities and we deliver from stock directly to your production site, always conforming with your changing processes and requirements. This is our understanding of customer service.

We live environmental protection and sustainability. We use **FSC certified cardboard**, save on energy by using modern machines and the latest building techniques, and all of our products are 100% recyclable. After usage, our packaging can be disposed of unseparated into the general waste paper system.

We produce your protective packaging using the latest state of the art technology, in the best quality and to the highest environmental standards. This is proven by our certified quality and environmental systems, according to **ISO 9001** and **ISO 14001**. This is what our good name stands for.

Yours sincerely



Bernhard Müller
(Sales Director)

Zertifiziertes Qualitätsmanagement System /
Certified quality management system
ISO 9001: 2015
Umweltmanagement nach /
Environmental management
ISO 14001: 2015

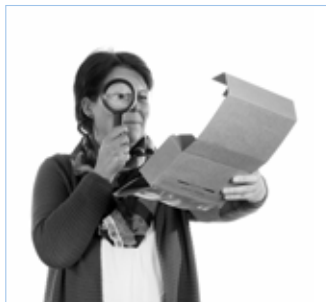


Our Team

Your expectations are a vital part of our work.

Quality Assurance

Angela Scholz



Head of Quality Management
Phone: +49 (0) 57 31 - 30 888 - 55
E-Mail: as@emba-protec.de

Purchasing

Silke Kusch



Purchasing Management
Phone: +49 (0) 57 31 - 30 888 - 62
E-Mail: sk@emba-protec.de

Michael Trunk



Purchasing
Telefon: 0 57 31 - 30 888 - 64
E-Mail: mt@emba-protec.de

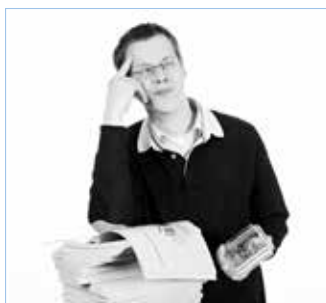
Nadine Gresförder



Purchasing
Phone: +49 (0) 57 31 - 30 888 - 31
E-Mail: ng@emba-protec.de

IT | Marketing

Dirk Hundertmark



IT | Marketing
Phone: +49 (0) 57 31 - 30 888 - 88
E-Mail: dh@emba-protec.de

Sales Service

Viktor Frick



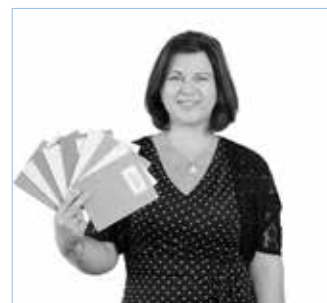
**Customer Support
National Sales**
Phone: +49 (0) 57 31 - 30 888 - 37
E-Mail: vf@emba-protec.de

Bianca Walter



**Customer Support
France, Eastern Europe, Benelux**
Phone: +49 (0) 57 31 - 30 888 - 45
E-Mail: bw@emba-protec.de

Valeska Bulmahn



**Customer Support
Great Britain, Ireland, Scandinavia,
Southern Europe, Non-EU**
Phone: +49 (0) 57 31 - 30 888 - 44
E-Mail: vb@emba-protec.de

Sales Service

Lina Schröder



**Customer Support
National Sales**
Phone: +49 (0) 57 31 - 30 888 - 39
E-Mail: ls@emba-protec.de

Leon Petersen



**Customer Support
National Sales**
Phone: +49 (0) 57 31 - 30 888 - 33
E-Mail: lp@emba-protec.de

Felix Bethke



**Customer Support
National Sales**
Phone: +49 (0) 57 31 - 30 888 - 38
E-Mail: fb@emba-protec.de

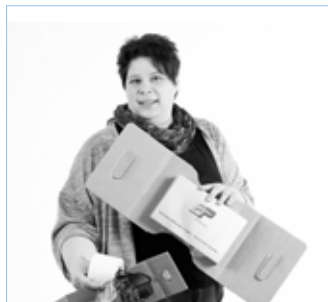
Development

Adam Grimann



Research & Development
Phone: +49 (0) 57 31 - 30 888 - 53
E-Mail: ag@emba-protec.de

Silke Menzel



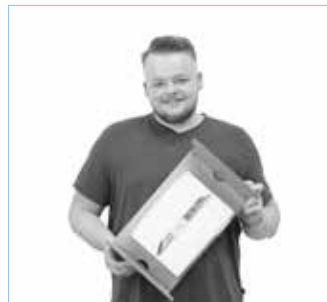
Research & Development
Phone: +49 (0) 57 31 - 30 888 - 52
E-Mail: sme@emba-protec.de

Ingo Keil



Research & Development
Phone: +49 (0) 57 31 - 30 888 - 54
E-Mail: ik@emba-protec.de

Jan Pietrek



Research & Development
Phone: +49 (0) 57 31 - 30 888 - 50
E-Mail: jp@emba-protec.de

Production Planning

Dirk Baumann



Production Planning
Phone: +49 (0) 57 31 - 30 888 - 61
E-Mail: db@emba-protec.de

Logistics

Daniel Kusch



Head of Logistics
Phone: +49 (0) 57 31 - 30 888 - 72
E-Mail: dku@emba-protec.de

Marcus Edler



Storage Management
Phone: +49 (0) 57 31 - 30 888 - 74
E-Mail: me@emba-protec.de

Plant Management

Karl-Heinz Vehring



Plant Management
Phone: +49 (0) 57 31 - 30 888 - 60
E-Mail: kv@emba-protec.de

Reception

Christina Frankowski



Reception
Phone: +49 (0) 57 31 - 30 888 - 0
E-Mail: info@emba-protec.de

Accounting

Melanie Wiek



Accounts Receivable Department
Phone: +49 (0) 57 31 - 30 888 - 15
E-Mail: mw@emba-protec.de

Laura Wiek



Accounts Receivable Department
Phone: +49 (0) 57 31 - 30 888 - 16
E-Mail: lw@emba-protec.de

Maria Kliwer



Accounts Receivable Department
Phone: +49 (0) 57 31 - 30 888 - 17
E-Mail: mkl@emba-protec.de

Our International Sales Team

We have a good reputation in consulting. And people who stand for it.

Sales Director

Bernhard Müller



Sales Director

Telefon: +49 (0) 57 31 - 30 888 - 13
Mobil: +49 (0) 1 72 - 1 57 20 19
E-Mail: bm@emba-protec.de

Sales Team International

Richard Gee



Sales Manager

United Kingdom / Ireland
Mobile: +44 (0) 79 64 - 32 44 37
E-Mail: rg@emba-protec.com

Agnieszka Szurman

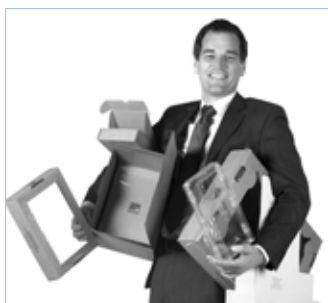


Sales Manager Eastern Europe

Mobile: +48 (0) 605 538 995
E-Mail: asz@emba-protec.com

Sales Team International

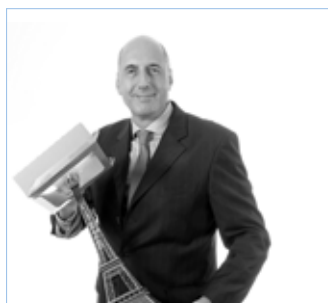
Henry Paasman



Business Development

Mobile: +31 (0) 6 53 43 36 19
E-Mail: hp@emba-protec.de

Bertrand Lavaud



Sales Manager France

Mobil: +33 (0) 7 66 55 00 94
E-Mail: bl@emba-protec.com

Ulf Helbich



Project Management

Phone: +49 (0) 57 31 - 30 888 - 36
Mobile: +49 (0) 1 74 - 2 62 09 49
E-Mail: uh@emba-protec.de

Marvin Holzmeyer



Sales Coordination

Phone: +49 (0) 57 31 - 30 888 - 34
E-Mail: mho@emba-protec.de

Emba-TrayTec® / Emba-Buzz n'Pack®



Buzz n' Pack[®]

The Decentralized Packaging Solution



WORLD FIRST

We present a revolutionary
new packaging technology.

You can find more about
this on pages 132 - 136.



Table of Contents

Packaging Systems

Emba-Flex® - The Retention Packaging

Page 12 - 34

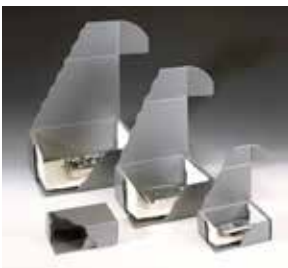


The special stretch mechanism of Emba Flex® ensures that the stretch film fixes the product firmly to the corrugated cardboard format, so avoiding any slipping. The highly flexible but practically tear-free stretch film clings perfectly to the different product contours.

In addition to the insert we also offer the matching shipping box.

Emba-Flex CLEANLINE® - The Plastic Retention Packaging

Page 36 - 43



To meet the highest requirements, we have developed a new product line based on our proven and successful packaging system Emba-Flex® (retention packaging). The idea was to offer a perfect solution for e.g. dental technology applications, precision engineering applications and chip technology applications, where dust-free packaging systems are necessary. To a large extent, the use of plastic packaging material minimises the amount of fine particles usually present when using corrugated board packaging.

Emba-Quick® - The One-Piece-Retention Packaging

Page 46 - 59



Based on our proven and successful packaging systems Emba-Flex® we offer an even faster packaging solution. The transport box is already attached. This saves time and storage space.

Emba-Quick SK® - The Suspension Packaging with self-adhesive closure

Page 60 - 71



Packaging doesn't get any faster than this.
All in one: fusible packaging, outer carton and sealing material.

Emba-Swing® - The Suspension Packaging

Page 72 - 86



The highly flexible but practically tear-free stretch film of the Emba-Swing® solution clings perfectly to the different product contours. Clamping between two suspension cushions means that the product will be stored as if it was "floating on air" during transport. Even if the box is dropped on its side walls also the heaviest products will remain in position.

The transport box is part of the set.

Table of Contents

Packaging Systems

Emba-One® - The best from 2 systems combined !

Page 88 - 93

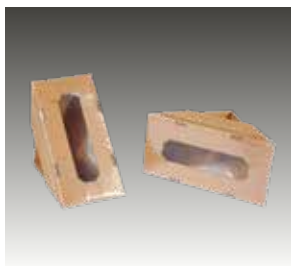


This flexible systems is compact and holds your product firmly in position during transit. With this process, Emba One® combines the good properties of product cushioning and product fixing.

Emba One® can individually adapt to even the most varied product contours. Due to the „suspended delivery“, there is a very high degree of protection against shocks and vibrations.

Special Packaging - The solution for “special” projects

Page 98 - 117

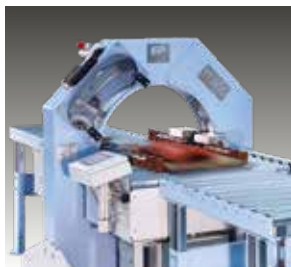


Our special packaging for screens is based on the suspension packaging Emba-Swing®. The corner suspension cushions can accommodate different display formats ranging from 32 to 60 inches. This version is especially useful in cases where a stand is pre-installed.

For laptops and netbooks we offer ideal standard packaging for sizes from 12” to 17” with optional accessory compartments.

Emba-TrayTec® - The automatic packaging solution

Page 118 - 127



This tray packaging machine ensures perfect product protection, high-speed packaging and low costs. This easy-to-operate machine offers maximum flexibility for constantly changing packing units with different heights and a weight of up to 160 kg.

New: Emba-TrayTec® Plus! Cushioning and retention in one.

Emba-Buzz n' Pack® - Packing on command

Page 132 - 136



The Decentralized Packaging Solution
Up to 4 packaging cycles per minute !

Shipping boxes - The wide world of outer cartons

Page 138 - 139



The use of extra strong corrugated board ensure highest safety also for shipping via postal service. Transport boxes with crash-lock base mean time savings of up to 80 % compared to traditional boxes. Due to high production volumes the best price is guaranteed.



Retention Packaging
Protection
fast handling
reduction process costs
environment-friendly
reusable
highly flexible

Emba-flex®

light and flat products up to 4 kg
for most unusual product contours
reducing amount of packaging

Emba-flex[®]

The Retention Packaging



**Application:**

Light and flat products of up to 4.0 kg (normally), requiring medium level protection

Features:

The packaging will adapt to even the most unusual product contours

Advantages:

The amount of packaging types is substantially reduced

The Retention Packaging

Emba-Flex® - The retention packaging

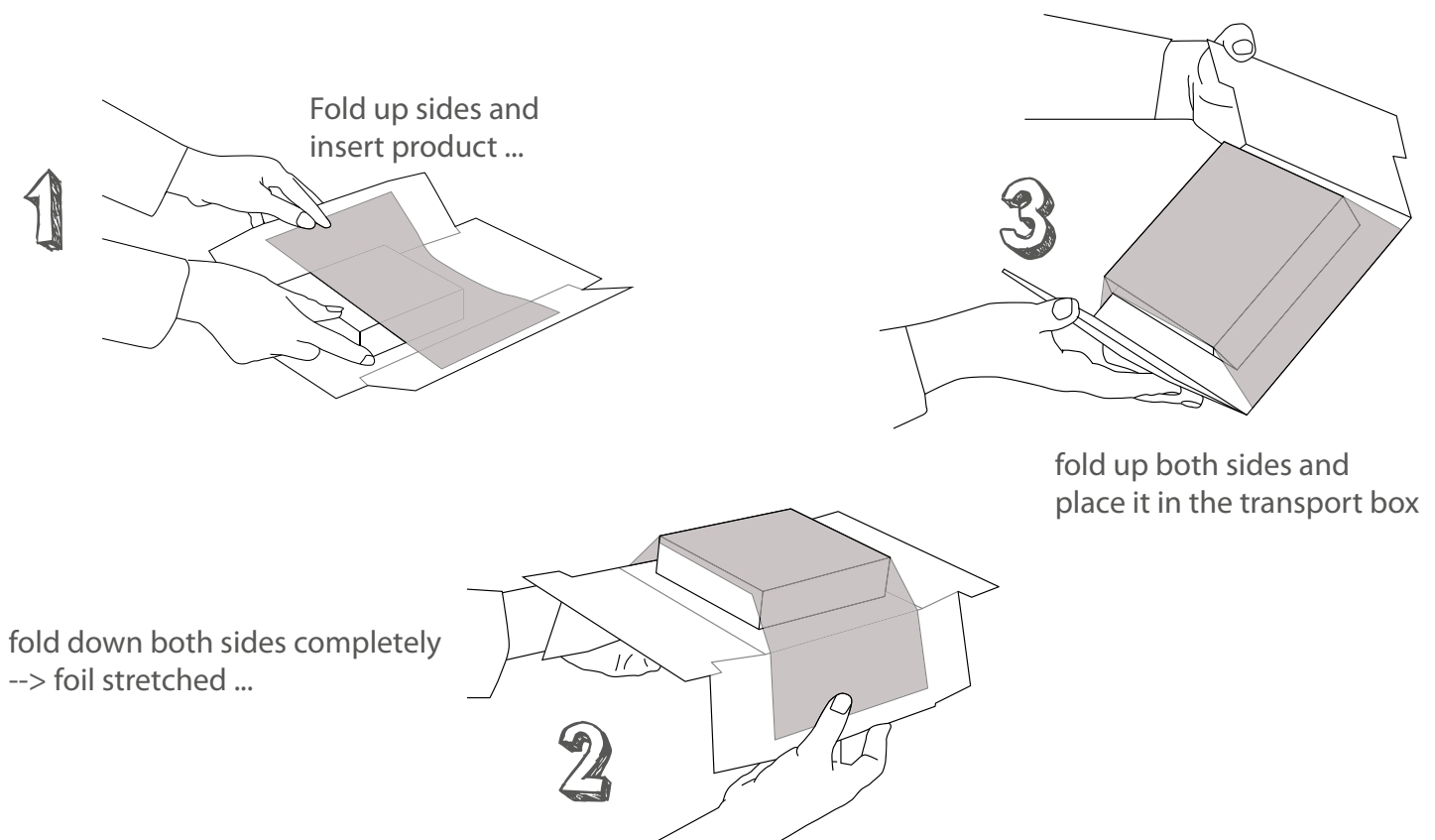
- high-level protection for the most varied products and contours
- reduction of packaging diversity by up to 90%
- transport boxes with crash-lock base guarantee fast handling
- quick fastening avoids box gluing
- reduction of process costs (procurement, storing, shipment)
- environment-friendly, can be disposed of with waste paper
- reusable (e.g. for repair services)
- professional appearance
- economical due to standard program (no tool costs)



The method

The special stretch mechanism ensures that the film fixes the product firmly to the corrugated cardboard format, so avoiding any slipping. The highly flexible but practically tear-free stretch film clings perfectly to the different product contours. This reduces your packaging diversity by up to 90%.

The special film is highly flexible and has unprecedented shrink behaviour after stretching. Even when stretched to an enormous extent the film almost returns back into it's original shape without a decrease in retention force.



The Retention Packaging

Application examples

Emba-Flex® adapts optimally to the most varied product contours like a second skin. New products from your range can often be packed immediately with existing packaging sizes. Also products of different sizes fit into the same-sized packaging solution.

Also product accessories are packed professionally and securely in accessory compartments or hollow bottom. Whether it's a manual, cables or remote controls, everything is securely fixed in position.

In addition to our immediate delivery program listed in the table below we also offer existing special packaging as well as new developments according to your individual needs.



The immediate delivery program

Maximum product size	Article code	Max. product weight	Page	Maximum product size	Article code	Max. product weight	Page
100 x 100 x 40 mm	FL 101004	ca. 0,5 kg	18	290 x 260 x 60 mm	FL 292606	ca. 2,5 kg	26
120 x 80 x 40 mm	FL 120804	ca. 0,5 kg	18	300 x 90 x 50 mm	FL 300905	ca. 0,8 kg	27
120 x 90 x 50 mm	FL 120905	ca. 0,8 kg	18	300 x 200 x 70 mm	FL 302007	ca. 2,5 kg	27
140 x 80 x 40 mm	FL 140804	ca. 0,5 kg	19	300 x 200 x 100 mm	FL 302010	ca. 2,5 kg	27
140 x 100 x 40 mm	FL 141004	ca. 1,0 kg	19	300 x 220 x 140 mm	FL 302214	ca. 2,5 kg	28
150 x 150 x 40 mm	FL 151504	ca. 1,5 kg	19	300 x 300 x 80 mm	FL 303008	ca. 3,0 kg	28
150 x 150 x 60 mm	FL 151506	ca. 1,5 kg	20	310 x 210 x 40 mm	FL 312104	ca. 2,5 kg	28
160 x 100 x 20 mm	FL 161002	ca. 0,5 kg	20	310 x 220 x 40 mm	FL 312204	ca. 3,0 kg	29
160 x 120 x 40 mm	FL 161204	ca. 0,5 kg	20	340 x 200 x 120 mm	FL 342012	ca. 2,0 kg	29
160 x 120 x 50 mm	FL 161205	ca. 0,5 kg	21	340 x 250 x 50 mm	FL 342505	ca. 3,5 kg	29
160 x 120 x 100 mm	FL 161210	ca. 1,5 kg	21	350 x 200 x 80 mm	FL 352008	ca. 2,0 kg	30
180 x 90 x 60 mm	FL 180906	ca. 0,8 kg	21	350 x 250 x 40 mm	FL 352504	ca. 2,0 kg	30
180 x 100 x 40 mm	FL 181004	ca. 1,0 kg	22	360 x 240 x 100 mm	FL 362410	ca. 2,5 kg	30
180 x 100 x 60 mm	FL 181006	ca. 1,0 kg	22	360 x 260 x 40 mm	FL 362604	ca. 3,0 kg	31
190 x 160 x 60 mm	FL 191606	ca. 1,0 kg	22	380 x 250 x 80 mm	FL 382508	ca. 3,0 kg	31
200 x 200 x 60 mm	FL 202006	ca. 1,5 kg	23	400 x 200 x 100 mm	FL 402010	ca. 3,0 kg	31
200 x 200 x 80 mm	FL 202008	ca. 1,5 kg	23	400 x 250 x 100 mm	FL 402510	ca. 3,5 kg	32
220 x 150 x 60 mm	FL 221506	ca. 1,5 kg	23	400 x 300 x 50 mm	FL 403005	ca. 4,5 kg	32
220 x 150 x 80 mm	FL 221508	ca. 1,5 kg	24	400 x 300 x 60 mm	FL 403006	ca. 2,5 kg	32
230 x 150 x 20 mm	FL 231502	ca. 1,0 kg	24	400 x 320 x 110 mm	FL 403211	ca. 5,0 kg	33
230 x 180 x 60 mm	FL 231806	ca. 1,5 kg	24	470 x 300 x 50 mm	FL 473005	ca. 4,5 kg	33
240 x 100 x 40 mm	FL 241004	ca. 1,5 kg	25	500 x 320 x 150 mm	FL 503215	ca. 5,0 kg	33
250 x 250 x 60 mm	FL 252506	ca. 2,0 kg	25	500 x 400 x 100 mm	FL 504010	ca. 5,0 kg	34
250 x 250 x 80 mm	FL 252508	ca. 2,0 kg	25	510 x 230 x 50 mm	FL 512305	ca. 2,5 kg	34
280 x 160 x 70 mm	FL 281607	ca. 2,0 kg	26	510 x 300 x 50 mm	FL 513005	ca. 2,5 kg	34
280 x 180 x 120 mm	FL 281812	ca. 2,5 kg	26				

Available in sets of 50 and more (1 insert, 1 box). Special sizes on request.

The Retention Packaging



FL 101004

Maximum product size: **100 x 100 x 40 mm**

Product data

Overall transport box dimensions 145 x 120 x 67 mm
Fefco 0713 with crash-lock base and closing lid
Quality E 1.20
Scope of delivery = Fixing insert 1 unit,
Transport box 1 unit

Article code	Version
FL 101004 S	NORMLine 50, PU film 50 microns
FL 101004 ESDS	ESDLine 50, PU film ESD 50 microns
FL 101004 EC6S	ECOLine 50, PE film 50 microns

Applications: sensors, switches, miniature devices, rotary encoder
Max. product weight: up to 500 gr.



FL 120804

Maximum product size: **120 x 80 x 40 mm**

Product data

Overall transport box dimensions
210 x 170 x 97 mm
Fefco 0713 with crash-lock base and
closing lid, Quality E 1.40
Scope of delivery = Fixing insert 1 unit,
Transport box 1 unit

**with accessory
compartment**

Article-code	Version
FL 120804 S	NORMLine 50, PU film 50 microns
FL 120804 ESDS	ESDLine 50, PU film ESD 50 microns
FL 120804 EC4S	ECOLine 40, PE film 40 microns

Einsatzbereich: Handys, miniature devices
Max. product weight: up to 500 gr.



FL 120905

Maximum product size: **120 x 90 x 50 mm**

Product data

Overall transport box dimensions 158 x 132 x 82 mm
Fefco 0713 with crash-lock base and closing lid
Quality B 1.30
Scope of delivery = Fixing insert 1 unit,
Transport box 1 unit

Article code	Version
FL 120905 S	NORMLine 50, PU film 50 microns
FL 120905 ESDS	ESDLine 50, PU film ESD 50 microns
FL 120905 EC6S	ECOLine 50, PE film 50 microns

Applications: sensors, displays, miniature devices, rotary encoder
Max. product weight: up to 800 gr.

The indicated max. weights are approximate values and can vary depending on the product to be shipped.

The Retention Packaging



FL 140804

Maximum product size: **140 x 80 x 40 mm**

Product data

Overall transport box dimensions 170 x 116 x 67 mm
Fefco 0713 with crash-lock base and closing lid
Quality E 1.20
Scope of delivery = Fixing insert 1 unit,
Transport box 1 unit

Article code	Version
FL 140804 S	NORMLine 50, PU film 50 microns
FL 140804 ESDS	ESDLine 50, PU film ESD 50 microns
FL 140804 EC6S	ECOLine 50, PE film 50 microns
Transport box alternatively available with quality B.130!	

Applications: mobile phones, displays, switches
Max. product weight: up to 500 gr.



FL 141004

Maximum product size: **140 x 100 x 40 mm**

Product data

Overall transport box dimensions 176 x 176 x 84 mm
Fefco 0713 with crash-lock base and closing lid
Quality B 1.30
Scope of delivery = Fixing insert 1 unit,
Transport box 1 unit

Article code	Version
FL 141004 S	NORMLine 50, PU film 50 microns
FL 141004 ESDS	ESDLine 50, PU film ESD 50 microns
FL 141004 EC6S	ECOLine 50, PE film 50 microns

Applications: sensors, switches, miniature devices, displays
Max. product weight: up to 1000 gr.



FL 151504

Maximum product size: **150 x 150 x 40 mm**

Product data

Overall transport box dimensions 199 x 183 x 86 mm
Fefco 0713 with crash-lock base and closing lid
Quality B 1.30
Scope of delivery = Fixing insert 1 unit,
Transport box 1 unit

Article code	Version
FL 151504 S	NORMLine 50, PU film 50 microns
FL 151504 ESDS	ESDLine 50, PU film ESD 50 microns
FL 151504 EC6S	ECOLine 50, PE film 50 microns
FL 151504 MS	MAXILine 100, PU film 100 microns

Applications: displays, miniature devices, instruments
Max. product weight: up to 1500 gr.

The indicated max. weights are approximate values and can vary depending on the product to be shipped.

The Retention Packaging



Maximum product size: **150 x 150 x 60 mm**

Product data

Overall transport box dimensions 199 x 183 x 109 mm
Fefco 0713 with crash-lock base and closing lid
Quality B 1.30
Scope of delivery = Fixing insert 1 unit,
Transport box 1 unit

Article code	Version
FL 151506 S	NORMLine 50, PU film 50 microns
FL 151506 ESDS	ESDLine 50, PU film ESD 50 microns
FL 151506 EC6S	ECOLine 50, PE film 50 microns
FL 151506 MS	MAXILine 100, PU film 100 microns

Applications: displays, miniature devices, porcelain, instruments
Max. product weight: up to 1500 gr.



Maximum product size: **160 x 100 x 20 mm**

Product data

Overall transport box dimensions
246 x 146 x 46 mm
Fefco 0427 hinged lid box
Quality E 1.20
Scope of delivery = Fixing insert 1 unit,
Transport box 1 unit

Article code	Version
FL 161002 S	NORMLine 50, PU film 50 microns
FL 161002 ESDS	ESDLine 50, PU film ESD 50 microns
FL 161002 EC6S	ECOLine 50, PE film 50 microns

Applications: Printed circuit boards
Max. product weight: up to 500 gr.



Maximum product size: **160 x 120 x 30 mm**

Product data

Overall transport box dimensions 182 x 165 x 52 mm
Fefco 0427 hinged lid box
Quality E 1.20
Scope of delivery = Fixing insert 1 unit,
Transport box 1 unit

Article code	Version
FL 161204 S	NORMLine 50, PU film 50 microns
FL 161204 ESDS	ESDLine 50, PU film ESD 50 microns
FL 161204 EC6S	ECOLine 50, PE film 50 microns

Applications: Printed circuit boards
Max. product weight: up to 500 gr.

The indicated max. weights are approximate values and can vary depending on the product to be shipped.

The Retention Packaging



Maximum product size: **160 x 120 x 50 mm**

Product data

Overall transport box dimensions 182 x 165 x 75 mm
Fefco 0427 hinged lid box
Quality E 1.20
Scope of delivery = Fixing insert 1 unit,
Transport box 1 unit

Article code	Version
FL 161205 S	NORMLine 50, PU film 50 microns
FL 161205 ESDS	ESDLine 50, PU film ESD 50 microns
FL 161205 EC6S	ECOLine 50, PE film 50 microns

Applications: printed circuit boards, hard disk drives
Max. product weight: up to 500 gr.



Maximum product size: **160 x 120 x 100 mm**

Product data

Overall transport box dimensions 200 x 167 x 139 mm
Fefco 0713 with crash-lock base and closing lid
Quality B 1.30
Scope of delivery = Fixing insert 1 unit,
Transport box 1 unit

Article code	Version
FL 161210 S	NORMLine 50, PU film 50 microns
FL 161210 ESDS	ESDLine 50, PU film ESD 50 microns
FL 161210 EC6S	ECOLine 50, PE film 50 microns

Applications: displays, mechatronics, controller, glass products
Max. product weight: up to 1500 gr.



Maximum product size: **180 x 90 x 60 mm**

Product data

Overall transport box dimensions 196 x 115 x 96 mm
Fefco 0713 with crash-lock base and closing lid
Quality B 1.30
Scope of delivery = Fixing insert 1 unit,
Transport box 1 unit

Article code	Version
FL 180906 S	NORMLine 50, PU film 50 microns
FL 180906 ESDS	ESDLine 50, PU film ESD 50 microns
FL 180906 EC6S	ECOLine 50, PE film 50 microns

Applications: mobile phones, mechatronics, miniature devices
Max. product weight: up to 800 gr.

The indicated max. weights are approximate values and can vary depending on the product to be shipped.

The Retention Packaging



Maximum product size: **180 x 100 x 40 mm**

Product data

Overall transport box dimensions 218 x 148 x 76 mm
Fefco 0713 with crash-lock base
Quality E 1.20
Scope of delivery = Fixing insert 1 unit,
Transport box 1 unit

Article code

Version

FL 181004 S	NORMLine 50, PU film 50 microns
FL 181004 ESDS	ESDLine 50, PU film ESD 50 microns
FL 181004 EC6S	ECOLine 50, PE film 50 microns

Applications: hard disk drives, displays, mechatronics, miniature devices. Max. product weight: up to 1000 gr.



Maximum product size: **180 x 100 x 60 mm**

Product data

Overall transport box dimensions 214 x 156 x 109 mm
Fefco 0713 with crash-lock base and closing lid
Quality B 1.30
Scope of delivery = Fixing insert 1 unit,
Transport box 1 unit

Article code

Version

FL 181006 S	NORMLine 50, PU film 50 microns
FL 181006 ESDS	ESDLine 50, PU film ESD 50 microns
FL 181006 EC6S	ECOLine 50, PE film 50 microns

Applications: displays, small devices, controllers, mechatronics
Max. product weight: up to 1000 gr.



Maximum product size: **190 x 160 x 60 mm**

Product data

Overall transport box dimensions 224 x 224 x 104 mm
Fefco 0713 with crash-lock base and closing lid
Quality B 1.30
Scope of delivery = Fixing insert 1 unit,
Transport box 1 unit

Article code

Version

FL 191606 S	NORMLine 50, PU film 50 microns
FL 191606 ESDS	ESDLine 50, PU film ESD 50 microns
FL 191606 EC6S	ECOLine 50, PE film 50 microns

Applications: displays, small devices, controllers, mechatronics
Max. product weight: up to 1000 gr.

The indicated max. weights are approximate values and can vary depending on the product to be shipped.

The Retention Packaging



FL 202006

Maximum product size: **200 x 200 x 60 mm**

Product data

Overall transport box dimensions 249 x 235 x 99 mm
Fefco 0713 with crash-lock base and closing lid
Quality B 1.30
Scope of delivery = Fixing insert 1 unit,
Transport box 1 unit

Article code	Version
FL 202006 S	NORMLine 50, PU film 50 microns
FL 202006 ESDS	ESDLine 50, PU film ESD 50 microns
FL 202006 EC6S	ECOLine 50, PE film 50 microns
FL 202006 MS	MAXILine 100, PU film 100 microns

Applications: displays, controllers, small devices, instruments
Max. product weight: up to 1500 gr.



FL 202008

Maximum product size: **200 x 200 x 80 mm**

Product data

Overall transport box dimensions 249 x 235 x 119 mm
Fefco 0713 with crash-lock base and closing lid
Quality B 1.30
Scope of delivery = Fixing insert 1 unit,
Transport box 1 unit

Article code	Version
FL 202008 S	NORMLine 50, PU film 50 microns
FL 202008 ESDS	ESDLine 50, PU film ESD 50 microns
FL 202008 EC6S	ECOLine 50, PE film 50 microns
FL 202008 MS	MAXILine 100, PU film 100 microns

Applications: displays, controller, small devices, instruments
Max. product weight: up to 1500 gr.



FL 221506

Maximum product size: **220 x 150 x 60 mm**

Product data

Overall transport box dimensions 255 x 199 x 99 mm
Fefco 0713 with crash-lock base and closing lid
Quality B 1.30
Scope of delivery = Fixing insert 1 unit,
Transport box 1 unit

Article code	Version
FL 221506 S	NORMLine 50, PU film 50 microns
FL 221506 ESDS	ESDLine 50, PU film ESD 50 microns
FL 221506 EC6S	ECOLine 50, PE film 50 microns
FL 221506 MS	MAXILine 100, PU film 100 microns

Applications: CD/DVD drives, controllers, small devices
Max. product weight: up to 1500 gr.

The indicated max. weights are approximate values and can vary depending on the product to be shipped.

The Retention Packaging



FL 221508

Maximum product size: **220 x 150 x 80 mm**

Product data

Overall transport box dimensions 255 x 199 x 119 mm
Fefco 0713 with crash-lock base and closing lid
Quality B 1.30
Scope of delivery = Fixing insert 1 unit,
Transport box 1 unit

Article code	Version
FL 221508 S	NORMLine 50, PU film 50 microns
FL 221508 ESDS	ESDLine 50, PU film ESD 50 microns
FL 221508 EC6S	ECOLine 50, PE film 50 microns
FL 221508 MS	MAXILine 100, PU film 100 microns

Applications: CD/DVD drives, controllers, small devices
Max. product weight: up to 1500 gr.



FL 231502

Maximum product size: **230 x 150 x 20 mm**

Product data

Overall transport box dimensions 338 x 211 x 47 mm
Fefco 0427 whinged lid box and accessory compartment, Quality E1.40
Scope of delivery = Fixing insert 1 unit, Transport box 1 unit

with accessory compartment

Article-code	Version
FL 231502 S	NORMLine 50, PU film 50 microns
FL 231502 ESDS	ESDLine 50, PU film ESD 50 microns
FL 231502 EC6S	ECOLine 50, PE film 50 microns
FL 231502 MS	MAXILine 100, PU film 100 microns

Applications: tablets, plates
Max. product weight: up to 1000 gr.



FL 231806

Maximum product size: **230 x 180 x 60 mm**

Product data

Overall transport box dimensions 300 x 210 x 89 mm
Fefco 0713 with crash-lock base and closing lid
Quality B 1.30
Scope of delivery = Fixing insert 1 unit,
Transport box 1 unit

Article code	Version
FL 231806 S	NORMLine 50, PU film 50 microns
FL 231806 ESDS	ESDLine 50, PU film ESD 50 microns
FL 231806 EC6S	ECOLine 50, PE film 50 microns
FL 231806 MS	MAXILine 100, PU film 100 microns

Applications: CD/DVD drives, controllers, small devices
Max. product weight: up to 1500 gr.

The indicated max. weights are approximate values and can vary depending on the product to be shipped.

The Retention Packaging



Maximum product size: **240 x 100 x 40 mm**

Product data

Overall transport box dimensions
306 x 153 x 92 mm
Fefco 0713 with crash-lock base and closing lid
Quality B 1.30
Scope of delivery = Fixing insert 1 unit,
Transport box 1 unit

Article-code	Version
FL 241004 S	NORMLine 50, PU film 50 microns
FL 241004 ESDS	ESDLine 50, PU film ESD 50 microns
FL 241004 EC6S	ECOLine 50, PE film 50 microns

Applications: controllers, control panels, instruments, plates
Max. product weight: up to 1500 gr.



Maximum product size: **250 x 250 x 60 mm**

Product data

Overall transport box dimensions 300 x 295 x 108 mm
Fefco 0713 with crash-lock base and closing lid
Quality C 1.40
Scope of delivery = Fixing insert 1 unit,
Transport box 1 unit

Article code	Version
FL 252506 S	NORMLine 50, PU film 50 microns
FL 252506 ESDS	ESDLine 50, PU film ESD 50 microns
FL 252506 EC6S	ECOLine 50, PE film 50 microns
FL 252506 MS	MAXILine 100, PU film 100 microns

Applications: controllers, control panels, instruments
Max. product weight: up to 2000 gr.



Maximum product size: **250 x 250 x 80 mm**

Product data

Overall transport box dimensions 300 x 295 x 138 mm
Fefco 0713 with crash-lock base and closing lid
Quality C 1.40
Scope of delivery = Fixing insert 1 unit,
Transport box 1 unit

Article code	Version
FL 252508 S	NORMLine 50, PU film 50 microns
FL 252508 ESDS	ESDLine 50, PU film ESD 50 microns
FL 252508 EC6S	ECOLine 50, PE film 50 microns
FL 252508 MS	MAXILine 100, PU film 100 microns

Applications: controllers, control panels, instruments
Max. product weight: up to 2000 gr.

The indicated max. weights are approximate values and can vary depending on the product to be shipped.

The Retention Packaging



FL 281607

Maximum product size: **280 x 160 x 70 mm**

Product data

Overall transport box dimensions 335 x 232 x 121 mm
Fefco 0713 with crash-lock base and closing lid
Quality B 1.30
Scope of delivery = Fixing insert 1 unit,
Transport box 1 unit

Article code

Version

FL 281607 S	NORMLine 50, PU film 50 microns
FL 281607 ESDS	ESDLine 50, PU film ESD 50 microns
FL 281607 EC6S	ECOLine 50, PE film 50 microns

Applications: 1 DIN car audio units, controllers, small devices
Max. product weight: up to 2000 gr.



FL 281812

Maximum product size: **280 x 180 x 120 mm**

Product data

Overall transport box dimensions 325 x 297 x 178 mm
Fefco 0201 slotted-type box with top and bottom flaps
Quality C 1.30
Scope of delivery = Fixing insert 1 unit,
Transport box 1 unit

Article code

Version

FL 281812 S	NORMLine 50, PU film 50 microns
FL 281812 ESDS	ESDLine 50, PU film ESD 50 microns
FL 281812 EC6S	ECOLine 50, PE film 50 microns
FL 281812 MS	MAXILine 100, PU film 100 microns

Applications: double DIN GPS units, control panels, instruments
Max. product weight: up to 2500 gr.



FL 292606

Maximum product size: **290 x 260 x 60 mm**

Product data

Overall transport box dimensions
452 x 339 x 98 mm
Fefco 0427 hinged lid box, Quality B 1.30
Scope of delivery = Fixing insert 1 unit,
Transport box 1 unit

Article code

Version

FL 292606 S	NORMLine 50, PU film 50 microns
FL 292606 ESDS	ESDLine 50, PU film ESD 50 microns
FL 292606 EC6S	ECOLine 50, PE film 50 microns
FL 292606 MS	MAXILine 100, PU film 100 microns

Applications: printed circuit boards, control panels, instruments
Max. product weight: up to 2500 gr.

The indicated max. weights are approximate values and can vary depending on the product to be shipped.

The Retention Packaging



FL 300905

Maximum product size: **300 x 90 x 50 mm**

Product data

Overall transport box dimensions 352 x 143 x 72 mm
Fefco 0421 hinged lid box
Quality B 1.30
Scope of delivery = Fixing insert 1 unit,
Transport box 1 unit

Article code	Version
FL 300905 S	NORMLine 50, PU film 50 microns
FL 300905 ESDS	ESDLine 50, PU film ESD 50 microns
FL 300905 EC6S	ECOLine 50, PE film 50 microns

Applications: batteries, probes, endoscopes
Max. product weight: up to 800 gr.



FL 302007

Maximum product size: **300 x 200 x 70 mm**

Product data

Overall transport box dimensions 344 x 251 x 118 mm
Fefco 0713 with crash-lock base and closing lid
Quality C 1.40
Scope of delivery = Fixing insert 1 unit,
Transport box 1 unit

Article code	Version
FL 302007 S	NORMLine 50, PU film 50 microns
FL 302007 ESDS	ESDLine 50, PU film ESD 50 microns
FL 302007 EC6S	ECOLine 50, PE film 50 microns
FL 302007 MS	MAXILine 100, PU film 100 microns

Applications: controllers, control panels, instruments, armatures
Max. product weight: up to 2500 gr.



FL 302010

Maximum product size: **300 x 200 x 100 mm**

Product data

Overall transport box dimensions 344 x 251 x 148 mm
Fefco 0713 with crash-lock base and closing lid
Quality C 1.40
Scope of delivery = Fixing insert 1 unit,
Transport box 1 unit

Article code	Version
FL 302010 S	NORMLine 50, PU film 50 microns
FL 302010 ESDS	ESDLine 50, PU film ESD 50 microns
FL 302010 EC6S	ECOLine 50, PE film 50 microns
FL 302010 MS	MAXILine 100, PU film 100 microns

Applications: controllers, control panels, instruments, armatures
Max. product weight: up to 2500 gr.

The indicated max. weights are approximate values and can vary depending on the product to be shipped.

The Retention Packaging



Maximum product size: **300 x 220 x 140 mm**

Product data

Overall transport box dimensions 349 x 339 x 200 mm
Fefco 0201 slotted-type box with top and bottom flaps
Quality C 1.30
Scope of delivery = Fixing insert 1 unit,
Transport box 1 unit

Article code	Version
FL 302214 S	NORMLine 50, PU film 50 microns
FL 302214 ESDS	ESDLine 50, PU film ESD 50 microns
FL 302214 EC6S	ECOLine 50, PE film 50 microns
FL 302214 MS	MAXILine 100, PU film 100 microns

Applications: panels, controllers, control panels, instruments
Max. product weight: up to 2500 gr.



Maximum product size: **300 x 300 x 80 mm**

Product data

Overall transport box dimensions 400 x 343 x 126 mm
Fefco 0713 with crash-lock base and closing lid
Quality C 1.40
Scope of delivery = Fixing insert 1 unit,
Transport box 1 unit

Article code	Version
FL 303008 S	NORMLine 50, PU film 50 microns
FL 303008 ESDS	ESDLine 50, PU film ESD 50 microns
FL 303008 EC6S	ECOLine 50, PE film 50 microns
FL 303008 MS	MAXILine 100, PU film 100 microns

Applications: laptops, controllers, control panels, instruments
Max. product weight: up to 3000 gr.



Maximum product size: **310 x 210 x 40 mm**

Product data

Overall transport box dimensions 376 x 268 x 96 mm
Fefco 0201 slotted-type box with top and bottom flaps
Quality B 1.20
Scope of delivery = Fixing insert 1 unit,
Transport box 1 unit

Article code	Version
FL 312104 S	NORMLine 50, PU film 50 microns
FL 312104 ESDS	ESDLine 50, PU film ESD 50 microns
FL 312104 EC5S	ECOLine 50, PE film 50 microns
FL 312104 MS	MAXILine 100, PU film 100 microns

Applications: 10" to 13" netbooks, panels, control panels, instruments. Max. product weight: up to 2500 gr.

New!

The indicated max. weights are approximate values and can vary depending on the product to be shipped.

The Retention Packaging



Maximum product size: **310 x 220 x 40 mm**

Product data

Overall transport box dimensions 368 x 288 x 116 mm
Fefco 0201 slotted-type box with top and bottom flaps
Quality C 1.30
Scope of delivery = Fixing insert 1 unit,
Transport box 1 unit

Article code	Version
FL 312204 S	NORMLine 50, PU film 50 microns
FL 312204 ESDS	ESDLine 50, PU film ESD 50 microns
FL 312204 EC6S	ECOLine 50, PE film 50 microns
FL 312204 MS	MAXILine 100, PU film 100 microns

Applications: 10" to 12" netbooks, panels, control panels, instruments. Max. product weight: up to 3000 gr.



Maximum product size: **340 x 200 x 120 mm**

Product data

Overall transport box dimensions 389 x 272 x 162 mm
Fefco 0201 slotted-type box with top and bottom flaps
Quality C 1.30
Scope of delivery = Fixing insert 1 unit,
Transport box 1 unit

Article code	Version
FL 342012 S	NORMLine 50, PU film 50 microns
FL 342012 ESDS	ESDLine 50, PU film ESD 50 microns
FL 342012 EC6S	ECOLine 50, PE film 50 microns
FL 342012 MS	MAXILine 100, PU film 100 microns

Applications: airbags, controllers, control panels, instruments
Max. product weight: up to 2000 gr.



Maximum product size: **340 x 250 x 50 mm**

Product data

Overall transport box dimensions 414 x 346 x 138 mm
Fefco 0201 slotted-type box with top and bottom flaps
Quality BC 2.30
Scope of delivery = Fixing insert 1 unit,
Transport box 1 unit

Article code	Version
FL 342505 S	NORMLine 50, PU film 50 microns
FL 342505 ESDS	ESDLine 50, PU film ESD 50 microns
FL 342505 EC6S	ECOLine 50, PE film 50 microns
FL 342505 MS	MAXILine 100, PU film 100 microns

Applications: 15" laptops, controllers, control panels, instruments, panels. Max. product weight: up to 3500 gr.

The indicated max. weights are approximate values and can vary depending on the product to be shipped.

The Retention Packaging



FL 352008

Maximum product size: **350 x 200 x 80 mm**

Product data

Overall transport box dimensions 394 x 292 x 123 mm
Fefco 0713 with crash-lock base and closing lid
Quality C 1.40
Scope of delivery = Fixing insert 1 unit,
Transport box 1 unit

Article code	Version
FL 352008 S	NORMLine 50, PU film 50 microns
FL 352008 ESDS	ESDLine 50, PU film ESD 50 microns
FL 352008 EC6S	ECOLine 50, PE film 50 microns
FL 352008 MS	MAXILine 100, PU film 100 microns

Applications: controllers, control panels, instruments, panels
Max. product weight: up to 2000 gr.



FL 352504

Maximum product size: **350 x 250 x 40 mm**

Product data

Overall transport box dimensions 435 x 315 x 115 mm
Fefco 0427 hinged lid box
Quality C 1.40
Scope of delivery = Fixing insert 1 unit,
Transport box 1 unit

Article code	Version
FL 352504 S	NORMLine 50, PU film 50 microns
FL 352504 ESDS	ESDLine 50, PU film ESD 50 microns
FL 352504 EC6S	ECOLine 50, PE film 50 microns
FL 352504 MS	MAXILine 100, PU film 100 microns

Applications: flat panels, TFT displays, technical glass products
Max. product weight: up to 2000 gr.



FL 362410

Maximum product size: **360 x 240 x 100 mm**

Product data

Overall transport box dimensions 434 x 306 x 171 mm
Fefco 0201 slotted-type box with top and bottom flaps
Quality C 1.30
Scope of delivery = Fixing insert 1 unit,
Transport box 1 unit

Article code	Version
FL 362410 S	NORMLine 50, PU film 50 microns
FL 362410 ESDS	ESDLine 50, PU film ESD 50 microns
FL 362410 EC6S	ECOLine 50, PE film 50 microns
FL 362410 MS	MAXILine 100, PU film 100 microns

Applications: controllers, control panels, instruments
Max. product weight: up to 2500 gr.

The indicated max. weights are approximate values and can vary depending on the product to be shipped.

The Retention Packaging

New!



FL 362604

Maximum product size: **360 x 260 x 40 mm**

Product data

Overall transport box dimensions

436 x 318 x 100 mm

Fefco 0201 slotted-type box with top and bottom flaps

Quality B 1.40

Scope of delivery = Fixing insert 1 unit, Transport box 1 unit

Article-code	Version
FL 362604 S	NORMLine 50, PU film 50 microns
FL 362604 ESDS	ESDLine 50, PU film ESD 50 microns
FL 362604 EC5S	ECOLine 50, PE film 50 microns
FL 362604 MS	MAXILine 100, PU film 100 microns

Applications: 15" laptops, controllers, instruments, plates

Max. product weight: up to 3500 gr.



FL 382508

Maximum product size: **380 x 250 x 80 mm**

Product data

Overall transport box dimensions

448 x 334 x 140 mm

Fefco 0201 slotted-type box with top and bottom flaps

Quality C 1.30

Scope of delivery = Fixing insert 1 unit, Transport box 1 unit

Article-code	Version
FL 382508 S	NORMLine 50, PU film 50 microns
FL 382508 ESDS	ESDLine 50, PU film ESD 50 microns
FL 382508 EC6S	ECOLine 50, PE film 50 microns
FL 382508 MS	MAXILine 100, PU film 100 microns

Applications: controllers, instruments, plates

Max. product weight: up to 3000 gr.



FL 402010

Maximum product size: **400 x 200 x 100 mm**

Product data

Overall transport box dimensions 477 x 272 x 154 mm

Fefco 0713 with crash-lock base and closing lid

Quality B 1.40

Scope of delivery = Fixing insert 1 unit,
Transport box 1 unit

Article code	Version
FL 402010 S	NORMLine 50, PU film 50 microns
FL 402010 ESDS	ESDLine 50, PU film ESD 50 microns
FL 402010 EC6S	ECOLine 50, PE film 50 microns
FL 402010 MS	MAXILine 100, PU film 100 microns

Applications: controllers, control panels, instruments, assemblies

Max. product weight: up to 3000 gr.

The indicated max. weights are approximate values and can vary depending on the product to be shipped.

The Retention Packaging



Maximum product size: **400 x 250 x 100 mm**

Product data

Overall transport box dimensions 547 x 335 x 170 mm
Fefco 0201 slotted-type box with top and bottom flaps
Quality BC 2.30
Scope of delivery = Fixing insert 1 unit,
Transport box 1 unit

Article code	Version
FL 402510 S	NORMLine 50, PU film 50 microns
FL 402510 ESDS	ESDLine 50, PU film ESD 50 microns
FL 402510 EC6S	ECOLine 50, PE film 50 microns
FL 402510 MS	MAXILine 100, PU film 100 microns

Applications: DVD recorders, panels, instruments
Max. product weight: up to 3500 gr.



Maximum product size: **400 x 300 x 50 mm**

Product data

Overall transport box dimensions 556 x 421 x 168 mm
Fefco 0201 slotted-type box with top and bottom flaps
Quality BC 2.30
Scope of delivery = Fixing insert 1 unit,
Transport box 1 unit

Article code	Version
FL 403005 S	NORMLine 50, PU film 50 microns
FL 403005 ESDS	ESDLine 50, PU film ESD 50 microns
FL 403005 EC6S	ECOLine 50, PE film 50 microns
FL 403005 MS	MAXILine 100, PU film 100 microns

Applications: 17" laptops, controllers, instruments, flat panels
Max. product weight: up to 4500 gr.



Maximum product size: **400 x 300 x 60 mm**

Product data

Overall transport box dimensions 552 x 339 x 88 mm
Fefco 0427 hinged lid box
Quality B 1.40
Scope of delivery = Fixing insert 1 unit,
Transport box 1 unit

Article code	Version
FL 403006 S	NORMLine 50, PU film 50 microns
FL 403006 ESDS	ESDLine 50, PU film ESD 50 microns
FL 403006 EC6S	ECOLine 50, PE film 50 microns
FL 403006 MS	MAXILine 100, PU film 100 microns

Applications: controllers, instruments, flat panels
Max. product weight: up to 2500 gr.

The indicated max. weights are approximate values and can vary depending on the product to be shipped.

The Retention Packaging



Maximum product size: **400 x 320 x 110 mm**

Product data

Overall transport box dimensions 538 x 380 x 190 mm
Fefco 0201 slotted-type box with top and bottom flaps
Quality BC 2.30
Scope of delivery = Fixing insert 1 unit,
Transport box 1 unit

Article code	Version
FL 403211 S	NORMLine 50, PU film 50 microns
FL 403211 ESDS	ESDLine 50, PU film ESD 50 microns
FL 403211 EC6S	ECOLine 50, PE film 50 microns
FL 403211 MS	MAXILine 100, PU film 100 microns

Applications: DCD recorders, 17" laptops, panels, instruments
Max. product weight: up to 5000 gr.



Maximum product size: **470 x 300 x 50 mm**

Product data

Overall transport box dimensions 566 x 366 x 112 mm
Fefco 0201 slotted-type box with top and bottom flaps
Quality B 1.40
Scope of delivery = Fixing insert 1 unit,
Transport box 1 unit

New!

Article code	Version
FL 473005 S	NORMLine 50, PU film 50 microns
FL 473005 ESDS	ESDLine 50, PU film ESD 50 microns
FL 473005 EC5S	ECOLine 50, PE film 50 microns
FL 473005 MS	MAXILine 100, PU film 100 microns

Applications: 17" laptops, DCD recorders, panels, instruments
Max. product weight: up to 4500 gr.



Maximum product size: **500 x 320 x 150 mm**

Product data

Overall transport box dimensions 615 x 395 x 228 mm
Fefco 0201 slotted-type box with top and bottom flaps
Quality BC 2.30
Scope of delivery = Fixing insert 1 unit,
Transport box 1 unit

Article code	Version
FL 503215 S	NORMLine 50, PU film 50 microns
FL 503215 ESDS	ESDLine 50, PU film ESD 50 microns
FL 503215 EC6S	ECOLine 50, PE film 50 microns
FL 503215 MS	MAXILine 100, PU film 100 microns

Applications: printed circuit boards, panels, control panels, instruments. Max. product weight: up to 5000 gr.

The indicated max. weights are approximate values and can vary depending on the product to be shipped.

The Retention Packaging



FL 504010

Maximum product size: **500 x 400 x 100 mm**

Product data

Overall transport box dimensions 635 x 480 x 188 mm
Fefco 0201 slotted-type box with top and bottom flaps
Quality BC 2.30
Scope of delivery = Fixing insert 1 unit,
Transport box 1 unit

Article code	Version
FL 504010 S	NORMLine 50, PU film 50 microns
FL 504010 ESDS	ESDLine 50, PU film ESD 50 microns
FL 504010 EC6S	ECOLine 50, PE film 50 microns
FL 504010 MS	MAXILine 100, PU film 100 microns

Applications: printed circuit boards, panels, control panels, instruments. Max. product weight: up to 5000 gr.



FL 512305

Maximum product size: **510 x 230 x 50 mm**

Product data

Overall transport box dimensions
592 x 309 x 88 mm
Fefco 0427 hinged lid box, Quality B 1.40
Scope of delivery = Fixing insert 1 unit,
Transport box 1 unit

Article code	Version
FL 512305 S	NORMLine 50, PU film 50 microns
FL 512305 ESDS	ESDLine 50, PU film ESD 50 microns
FL 512305 EC6S	ECOLine 50, PE film 50 microns
FL 512305 MS	MAXILine 100, PU film 100 microns

Applications: printed circuit boards, panels, control panels, instruments. Max. product weight: up to 2500 gr.



FL 513005

Maximum product size: **510 x 300 x 50 mm**

Product data

Overall transport box dimensions
592 x 384 x 88 mm
Fefco 0427 hinged lid box, Quality B 1.40
Scope of delivery = Fixing insert 1 unit,
Transport box 1 unit

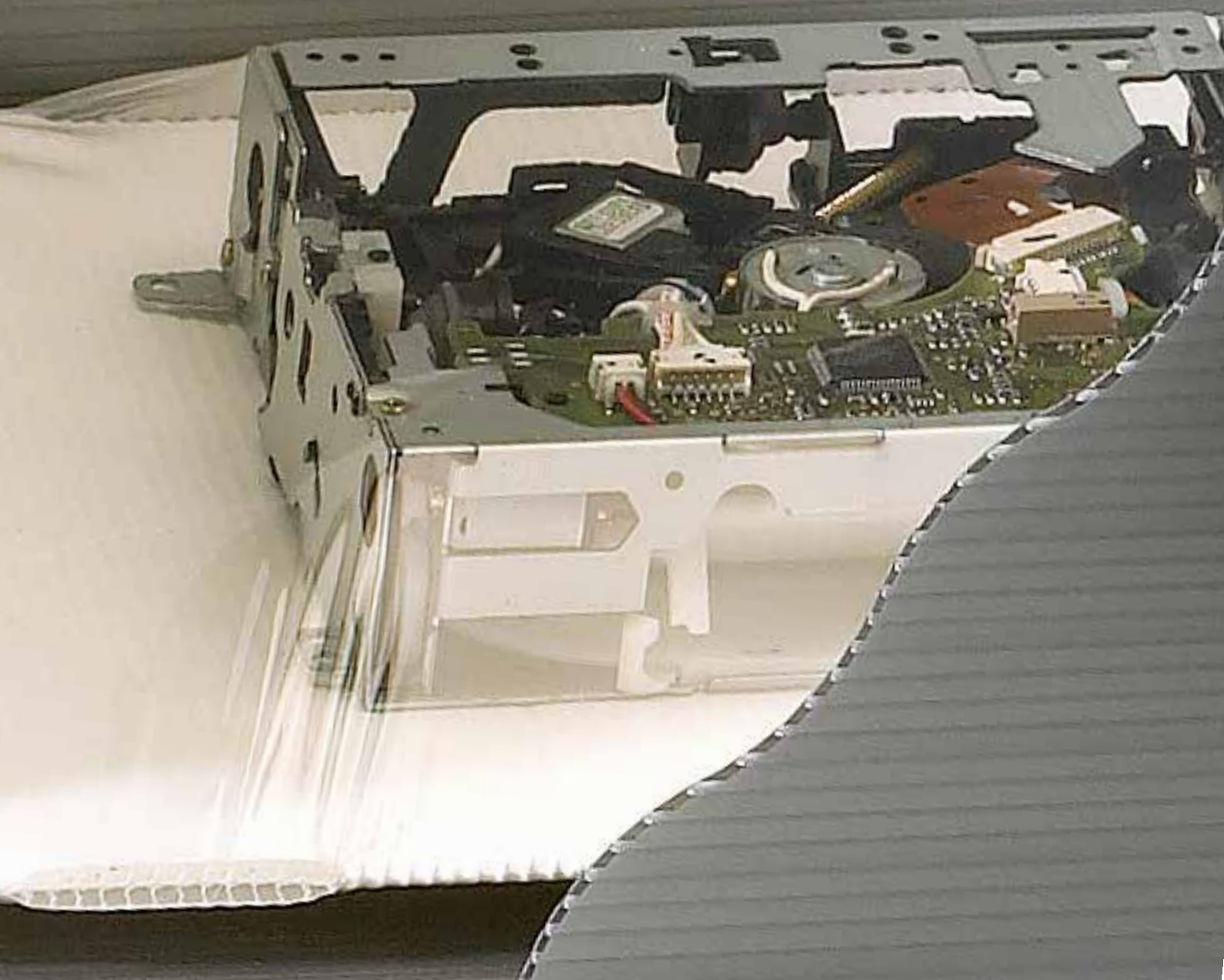
Article code	Version
FL 513005 S	NORMLine 50, PU film 50 microns
FL 513005 ESDS	ESDLine 50, PU film ESD 50 microns
FL 513005 EC6S	ECOLine 50, PE film 50 microns
FL 513005 MS	MAXILine 100, PU film 100 microns

Applications: printed circuit boards, panels, control panels, instruments. Max. product weight: up to 2500 gr.

The indicated max. weights are approximate values and can vary depending on the product to be shipped.



Things will be spick and span
now ...



plastic retention
packaging
dust-sensitive goods
of up to 4.0 kg (normally) in
robust plastic packaging material
reusable
Emba-flex
CLEANline®
minimises the amount of fine particles
reducing the amount of packaging
for different product contours

Emba-Flex Clean Line[®]

The Plastic Retention Packaging



**Application:**

For dust-sensitive goods.
Light products of up to 4.0 kg (normally),
requiring medium level protection

Features:

Packaging made of pure twinwall polypropylene
Very sturdy

Advantages:

Minimises the amount of fine particles usually present when
using corrugated board packaging
The amount of packaging types is substantially reduced
Reusable

The plastic retention packaging

Emba-Flex CLEAN Line®

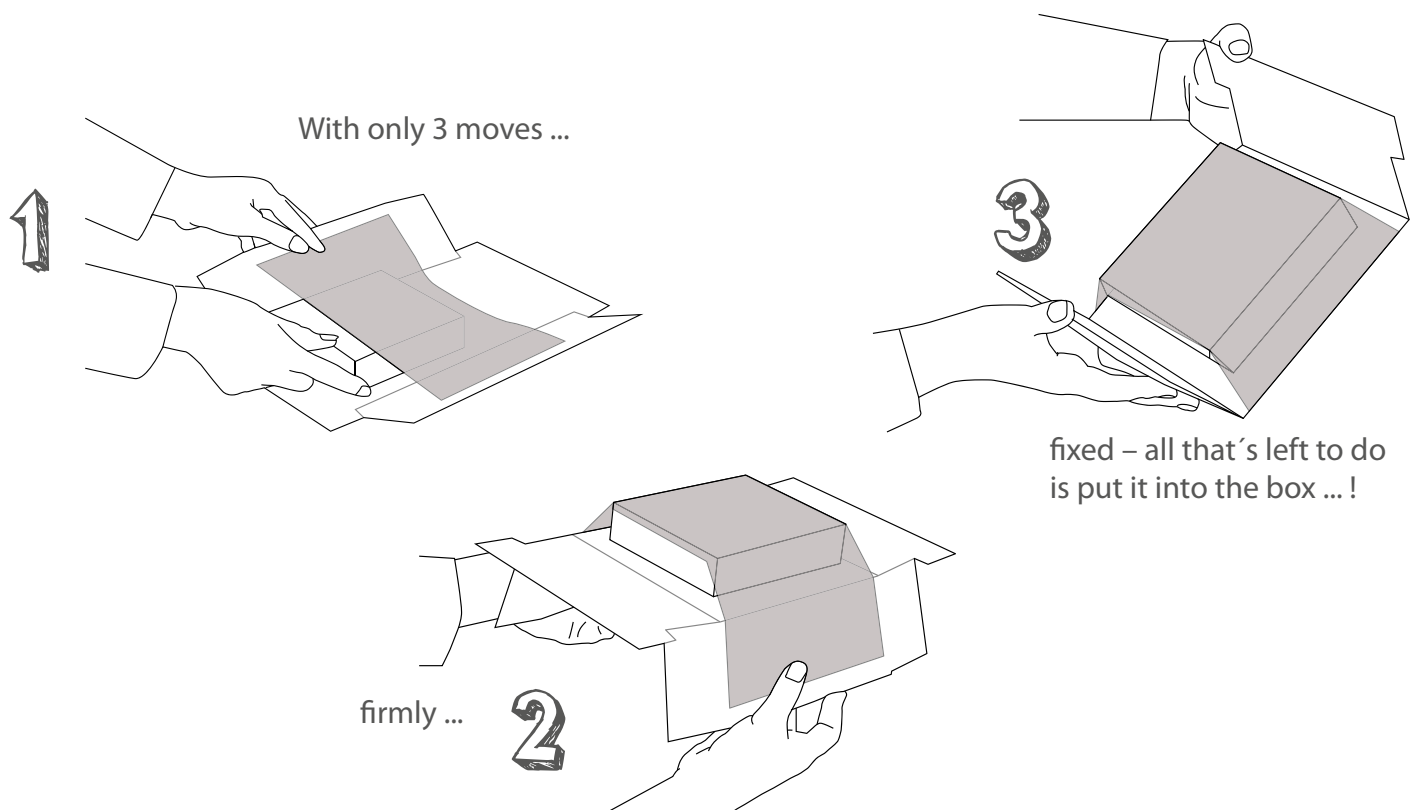
- made of twinwall polypropylene sheet
- high degree of protection for various product contours
- reduction of packaging diversity by up to 90%
- minimises the amount of fine particles usually present when using corrugated board packaging
- upon request also available as cleanroom version cleaned according to class 7
- packaging of high visual quality
- robust and reusable packaging



The method

The special fold mechanism ensures that the stretch film fixes the product firmly to the corrugated cardboard format, so avoiding any slipping. The highly flexible but practically tear-free stretch film clings perfectly to the different product contours. This reduces your packaging diversity by up to 90 %.

The special PU-film is highly flexible and has unprecedented shrink behaviour after stretching. Even when stretched to an enormous extent the film almost returns back into it's original shape without a decrease in retention force.



The plastic retention packaging

Application examples

To meet the highest requirements, we have developed a new product line based on our proven and successful packaging systems Emba-Flex® (retention packaging) and Emba-Swing® (suspension packaging).

The idea was to offer a perfect solution for e.g. dental technology applications, precision engineering applications and chip technology applications, where dust-free packaging systems are necessary.

To a large extent, the use of plastic packaging material minimises the amount of fine particles usually present when using corrugated board packaging.



The immediate delivery program

Maximum product size (mm)	Article code	Product data on page
120 x 70 x 40 mm	FL 120704 CLES	42
200 x 140 x 70 mm	FL 201407 CLES	42
280 x 190 x 90 mm	FL 281909 CLES	42
390 x 320 x 110 mm	FL 393211 CLES	43

Available in sets of 50 and more (1 insert, 1 box). Special sizes on request.



The plastic retention packaging



Product data

Overall transport box dimensions 171 x 112 x 72 mm
 Fefco 0427 hinged lid box
 Quality: Twinwall polypropylene, white, anti-static
 Scope of delivery = Fixing insert 1 unit,
 Transport box 1 unit

Article code

FL 120704 CLES

Version

ESDLine 50, PU film ESD 50 microns

Maximum product size: **120 x 70 x 40 mm**



Product data

Overall transport box dimensions 254 x 194 x 120 mm
 Fefco 0427 hinged lid box
 Quality: Twinwall polypropylene, white, anti-static
 Scope of delivery = Fixing insert 1 unit,
 Transport box 1 unit

Article code

FL 201407 CLES

Version

ESDLine 75, PU film ESD 75 microns

Maximum product size: **200 x 140 x 70 mm**



Product data

Overall transport box dimensions 343 x 245 x 145 mm
 Fefco 0427 hinged lid box
 Quality: Twinwall polypropylene, white, anti-static
 Scope of delivery = Fixing insert 1 unit,
 Transport box 1 unit

Article code

FL 281909 CLES

Version

ESDLine 75, PU film ESD 75 microns

Maximum product size: **280 x 190 x 90 mm**

The plastic retention packaging



FL 393211 CL

Product data

Overall transport box dimensions 516 x 370 x 200 mm

Fefco 0201 folding box with base and cover flaps

Quality: Twinwall polypropylene, white, anti-static

Scope of delivery = Fixing insert 1 unit,
Transport box 1 unit

Article code

Version

FL 393211 CLES

ESDLine 100, PU film ESD 100 microns

Maximum product size: **390 x 320 x 110 mm**

Emba-flex® ECO

Now we're totally eco !

Application:

For flat, lightweight items that weigh up to 3 kg (generally) and have the same design.

Features:

The packaging is completely free from film and foam. The product is firmly fixed in the box.

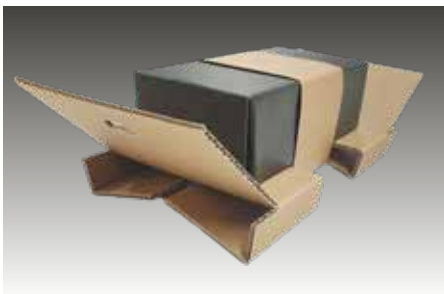
Advantages:

Your product is perfectly protected during shipment. This pure, paper-based single-material solution goes a long way in protecting the environment. Your customers will be impressed by your "totally eco" approach.

European Patent EP 3 892 556
The only patented fixation packaging
on a pure paper basis!

The pure single-substance solution

Shipping sensitive products used to involve a lot of effort. It took time and expensive packaging material (usually made of foam or film) to prepare sensitive and high-quality products for despatch. Emba-Protec has solved both problems with a new innovative packaging! You have already achieved a great deal with the retention packaging from our company. Perfect protection at a reasonable cost. Now we have been able to replace the film with pure, high-quality kraft liner paper. We use a new type of folding process to secure your products. You save time, money and therefore considerable processing costs. And you are doing the environment a big favour.



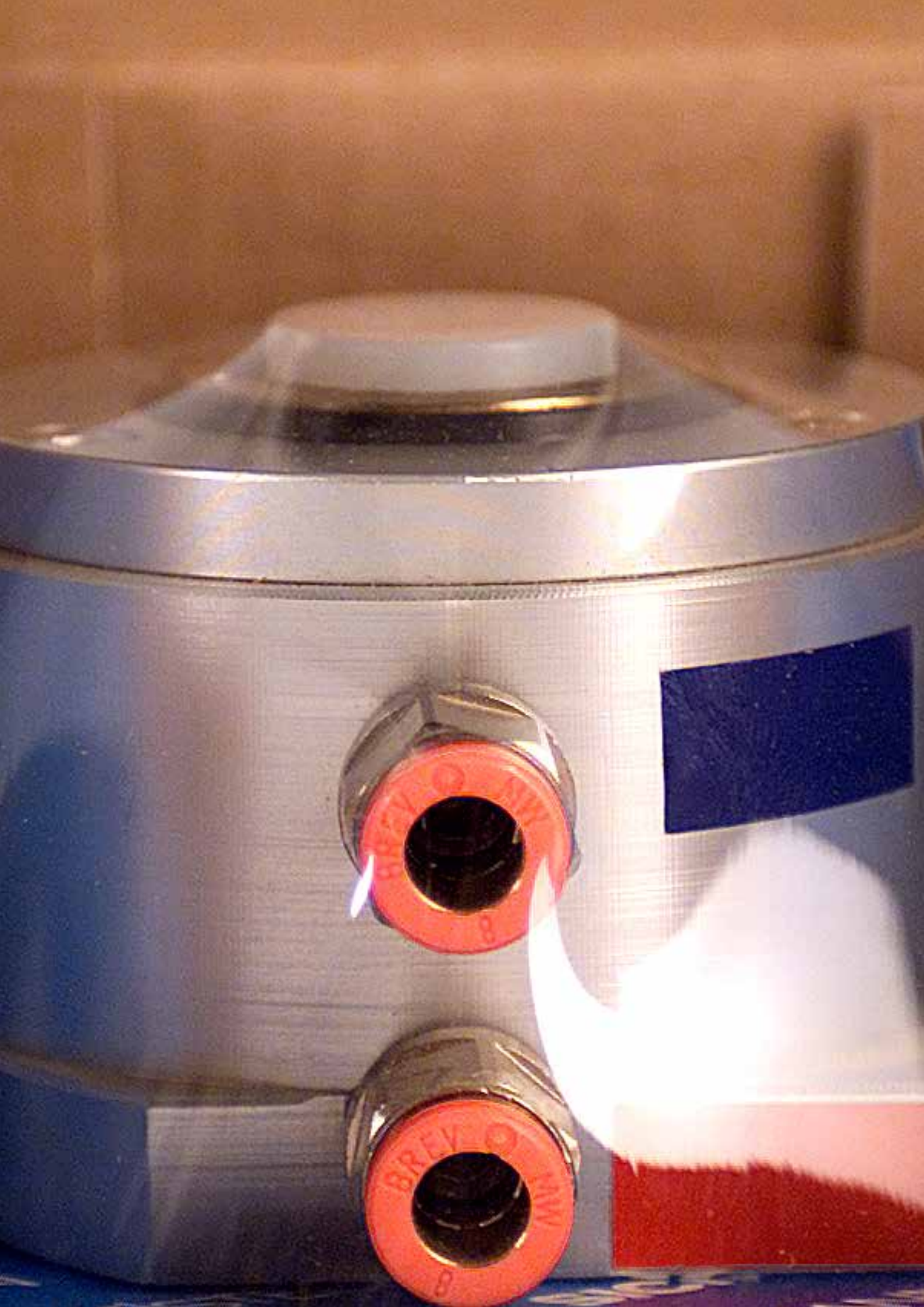
Effort
Protection
Eco

small
large
FULL

Emba-Flex[®] ECO
European patent
EP 3 892 556

Doc Emba recommends:
The one-piece retention packaging





retention packaging one-piece Emba-Quick®

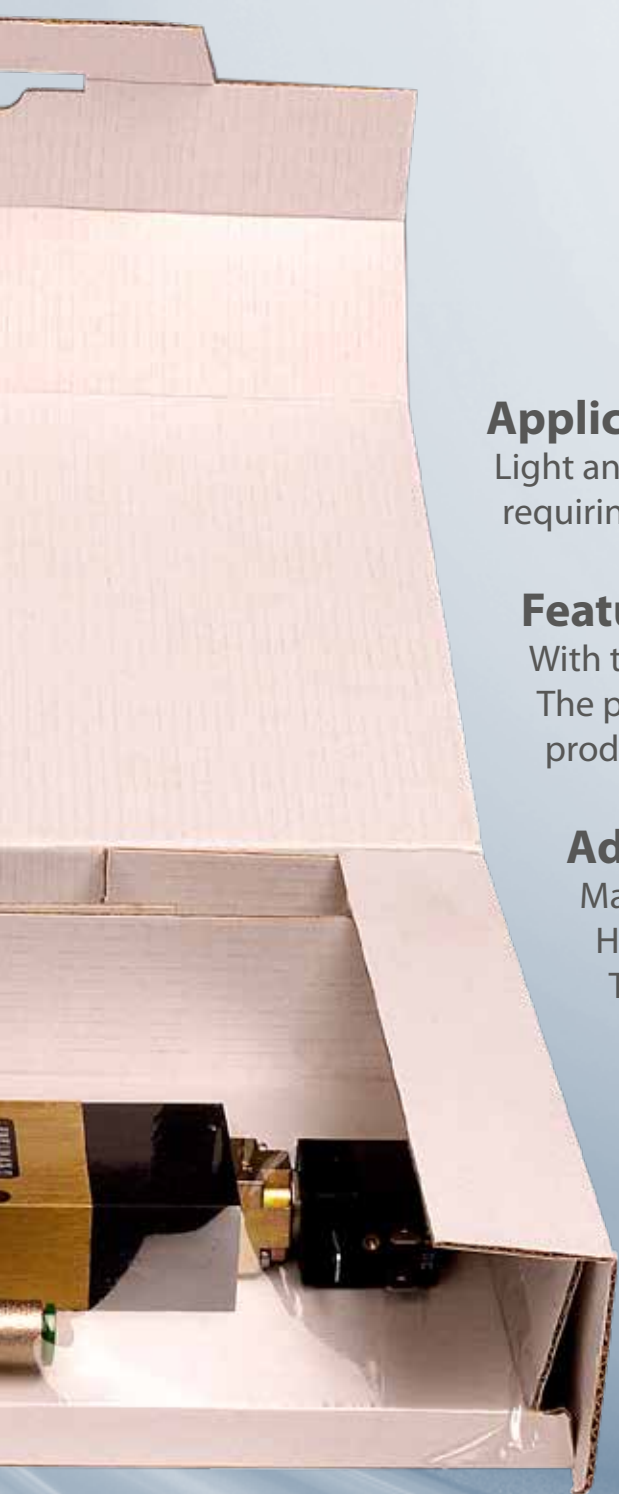
intelligent handling
high-speed packaging
one-piece

light and flat products of up to 2 kg (i.d.R.)
for medium level protection
major storage space savings
transport box attached

Emba-Quick[®]

The one-piece retention packaging





Application:

Light and flat products of up to 2.0 kg (normally),
requiring medium level protection

Features:

With transport box attached

The packaging will adapt to even the most unusual
product contours

Advantages:

Major storage space savings

High-speed packaging

The amount of packaging types
is substantially reduced

The one-piece retention packaging

Emba-Quick®

The one-piece retention packaging

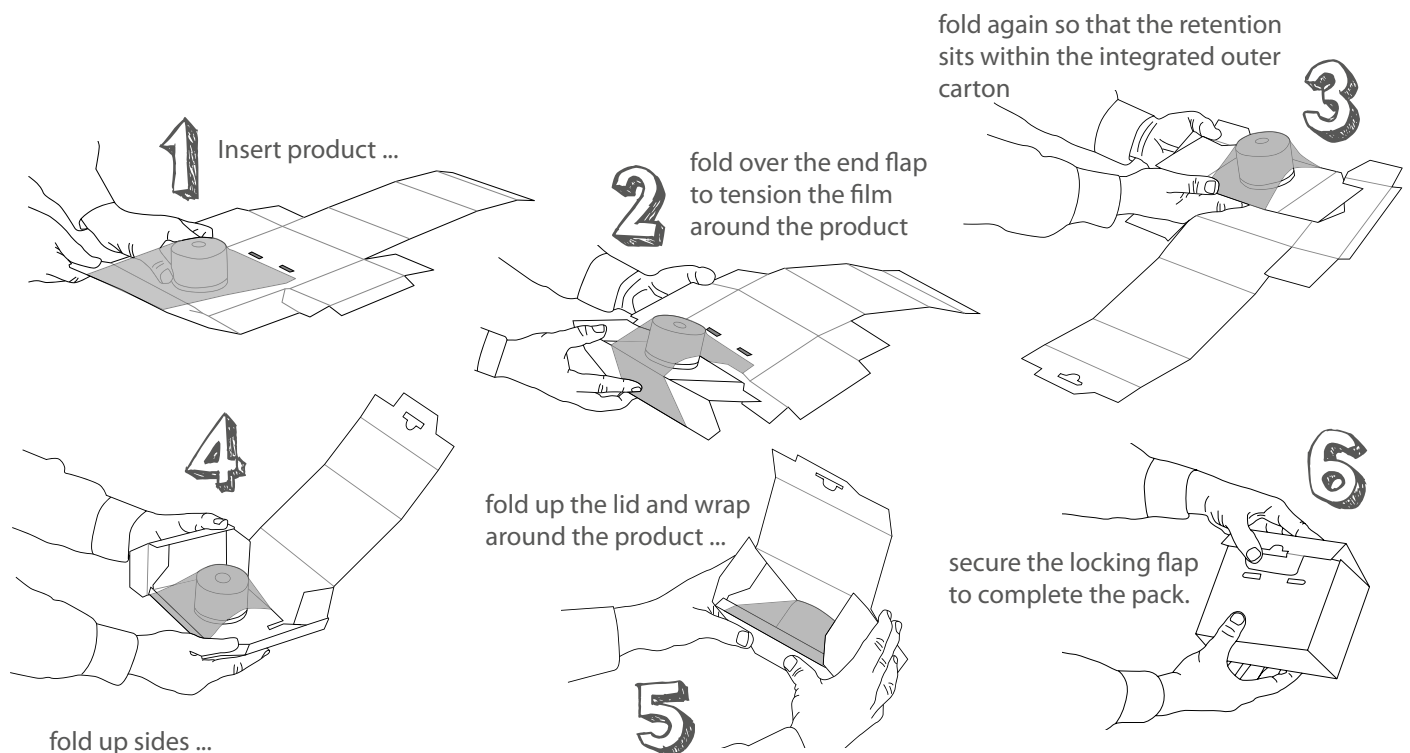
- packing in 10 seconds
- no extra transport box needed
- quick fastening avoids box gluing
- optionally with self-adhesive closure
- high-quality printing possible
- can be equipped with a hollow bottom or extra side pocket for accessories
- reduction of process costs (procurement, storing, shipment)
- reusable
- environment-friendly, can be disposed of with waste paper
- professional appearance
- economical due to standard program (no tool costs)



The method

The same special stretch mechanism as for Emba-Flex®. The stretch film fixes the product firmly to the corrugated cardboard format.

Emba-Quick® comprises an attached transport box. This solution saves space, time and costs.



The one-piece retention packaging

Application examples

Emba-Quick® adapts optimally to the most varied product contours like a second skin. New products from your company can often be packed immediately with existing packaging sizes.

Also product accessories can be packed securely in accessory compartments or hollow bottom. Whether it's a manual, cables or remote controls, everything is securely fixed in position.

In addition to our immediate delivery program listed in the table below we also offer existing special packaging as well as new developments according to your individual needs.



The immediate delivery program

Maximum product size (mm)	Article Codes NORM- / ESD- / ECOLine	Max. Product Weight	Page
70 x 50 x 20 mm	FL 070502 Q / ESQ / ECQ	ca. 0,4 kg	52
70 x 50 x 50 mm	FL 070505 Q / ESQ / ECQ	ca. 0,8 kg	52
80 x 50 x 30 mm	FL 080503 Q / ESQ / ECQ	ca. 0,8 kg	52
100 x 90 x 60 mm	FL 100906 Q / ESQ / ECQ	ca. 1,0 kg	53
120 x 90 x 40 mm	FL 120904 Q / ESQ / ECQ	ca. 1,0 kg	53
120 x 100 x 20 mm	FL 121002 Q / ESQ / ECQ	ca. 1,0 kg	53
120 x 110 x 60 mm	FL 121106 Q / ESQ / ECQ	ca. 1,0 kg	54
140 x 90 x 30 mm	FL 140903 Q / ESQ / ECQ	ca. 1,0 kg	54
140 x 90 x 50 mm	FL 140905 Q / ESQ / ECQ	ca. 1,0 kg	54
150 x 70 x 20 mm	FL 150702 Q / ESQ / ECQ	ca. 0,8 kg	55
150 x 130 x 50 mm	FL 151305 Q / ESQ / ECQ	ca. 1,0 kg	55
160 x 80 x 10 mm	FL 160801 Q / ESQ / ECQ	ca. 0,7 kg	55
180 x 110 x 50 mm	FL 181105 Q / ESQ / ECQ	ca. 2,0 kg	56
180 x 120 x 60 mm	FL 181206 Q / ESQ / ECQ	ca. 2,0 kg	56
180 x 180 x 40 mm	FL 181804 Q / ESQ / ECQ	ca. 2,0 kg	56
190 x 120 x 30 mm	FL 191203 Q / ESQ / ECQ	ca. 1,0 kg	57
200 x 120 x 20 mm	FL 201202 Q / ESQ / ECQ	ca. 1,5 kg	57
200 x 160 x 30 mm	FL 201603 Q / ESQ / ECQ	ca. 1,5 kg	57
240 x 160 x 70 mm	FL 241607 Q / ESQ / ECQ	ca. 2,0 kg	58
240 x 180 x 10 mm	FL 241801 Q / ESQ / ECQ	ca. 1,5 kg	58
250 x 180 x 50 mm	FL 251805 Q / ESQ / ECQ	ca. 2,0 kg	58
280 x 180 x 50 mm	FL 281805 Q / ESQ / ECQ	ca. 1,5 kg	59
400 x 250 x 30 mm	FL 402503 Q / ESQ / ECQ	ca. 2,0 kg	59



The one-piece retention packaging



Maximum product size: **70 x 50 x 20 mm**

Product data

Overall dimensions 89 x 72 x 44 mm

Quality E 1.40

Scope of delivery = Retention packaging with
attached transport box
1 unit

Article code

Version

FL 070502 Q

NORMLine 50, PU film 50 microns

FL 070502 ESQ

ESDLine 50, PU film ESD 50 microns

FL 070502 ECQ

ECOLine 50, PE film 50 microns

Applications: printed circuit boards, probes, sensors
Max. product weight: up to 400 gr.



Maximum product size: **70 x 50 x 50 mm**

Product data

Overall dimensions 106 x 92 x 78 mm

Quality E 1.40

Scope of delivery = Retention packaging with
attached transport box
1 unit

Article code

Version

FL 070505 Q

NORMLine 50, PU film 50 microns

FL 070505 ESQ

ESDLine 50, PU film ESD 50 microns

FL 070505 ECQ

ECOLine 50, PE film 50 microns

Applications: printed circuit boards, probes, sensors
Max. product weight: up to 800 gr.



Maximum product size: **80 x 50 x 30 mm**

Product data

Overall dimensions 107 x 84 x 66 mm

Quality B 1.40

Scope of delivery = Retention packaging with
attached transport box
1 unit

Article code

Version

FL 080503 Q

NORMLine 50, PU film 50 microns

FL 080503 ESQ

ESDLine 50, PU film ESD 50 microns

FL 080503 ECQ

ECOLine 50, PE film 50 microns

Applications: printed circuit boards, probes, sensors
Max. product weight: up to 800 gr.

The indicated max. weights are approximate values and can vary depending on the product to be shipped.

The one-piece retention packaging



Maximum product size: **100 x 90 x 60 mm**

Product data

Overall dimensions 132 x 136 x 102 mm
 Quality B 1.30
 Scope of delivery = Retention packaging with attached transport box
 1 unit

Article code	Version
FL 100906 Q	NORMLine 50, PU film 50 microns
FL 100906 ESQ	ESDLine 50, PU film ESD 50 microns
FL 100906 ECQ	ECOLine 50, PE film 50 microns

Applications: controllers, displays, sensors
 Max. product weight: up to 1000 gr.



Maximum product size: **120 x 90 x 40 mm**

Product data

Overall dimensions 159 x 121 x 85 mm
 Quality E 1.40
 Scope of delivery = Retention packaging with attached transport box
 1 unit

Article code	Version
FL 120904 Q	NORMLine 50, PU film 50 microns
FL 120904 ESQ	ESDLine 50, PU film ESD 50 microns
FL 120904 ECQ	ECOLine 50, PE film 50 microns

Applications: controllers, displays, sensors
 Max. product weight: up to 1000 gr.



Maximum product size: **120 x 100 x 20 mm**

Product data

Overall dimensions 170 x 145 x 47 mm
 Quality E 1.40
 Scope of delivery = Retention packaging with attached transport box
 1 unit

Article-code	Version
FL 121002 Q	NORMLine 50, PU Folie 50 microns
FL 121002 ESQ	ESDLine 50, PU Folie ESD 50 microns
FL 121002 ECQ	ECOLine 50, PE film 50 microns

Applications: Relay, plates
 Max. product weight: up to 1000 gr.

The indicated max. weights are approximate values and can vary depending on the product to be shipped.

The one-piece retention packaging



Maximum product size: **120 x 110 x 60 mm**

Product data

Overall dimensions 160 x 136 x 109 mm

Quality E 1.40

Scope of delivery = Retention packaging with
attached transport box
1 unit

Article code

Version

FL 121106 Q

NORMLine 50, PU film 50 microns

FL 121106 ESQ

ESDLine 50, PU film ESD 50 microns

FL 121106 ECQ

ECOLine 50, PE film 50 microns

Applications: controllers, displays, sensors

Max. product weight: up to 1000 gr.



Maximum product size: **140 x 90 x 30 mm**

Product data

Overall dimensions 180 x 130 x 71 mm

Quality B 1.30

Scope of delivery = Retention packaging with
attached transport box
1 unit

Article code

Version

FL 140903 Q

NORMLine 50, PU film 50 microns

FL 140903 ESQ

ESDLine 50, PU film ESD 50 microns

FL 140903 ECQ

ECOLine 50, PE film 50 microns

Applications: controllers, displays, sensors

Max. product weight: up to 1000 gr.



Maximum product size: **140 x 90 x 50 mm**

Product data

Overall dimensions 178 x 135 x 90 mm

Quality B 1.30

Scope of delivery = Retention packaging with
attached transport box
1 unit

Article code

Version

FL 140905 Q

NORMLine 50, PU film 50 microns

FL 140905 ESQ

ESDLine 50, PU film ESD 50 microns

FL 140905 ECQ

ECOLine 50, PE film 50 microns

Applications: controllers, displays, sensors

Max. product weight: up to 1000 gr.

The indicated max. weights are approximate values and can vary depending on the product to be shipped.

The one-piece retention packaging



Maximum product size: **150 x 70 x 20 mm**

Product data

Overall dimensions 200 x 107 x 49 mm
 Quality E 1.50
 Scope of delivery = Retention packaging with attached transport box
 1 unit

Article code	Version
FL 150702 Q	NORMLine 50, PU film 50 microns
FL 150702 ESQ	ESDLine 50, PU film ESD 50 microns
FL 150702 ECQ	ECOLine 50, PE film 50 microns

Applications: plates, small devices, smartphones
 Max. product weight: up to 750 gr.



Maximum product size: **150 x 130 x 50 mm**

Product data

Overall dimensions 183 x 168 x 83 mm
 Quality B 1.30
 Scope of delivery = Retention packaging with attached transport box
 1 unit

Article code	Version
FL 151305 Q	NORMLine 50, PU film 50 microns
FL 151305 ESQ	ESDLine 50, PU film ESD 50 microns
FL 151305 ECQ	ECOLine 50, PE film 50 microns

Applications: controllers, instruments, sensors, displays
 Max. product weight: up to 1000 gr.



Maximum product size: **160 x 80 x 10 mm**

Product data

Overall dimensions 195 x 110 x 50 mm
 Quality E 1.40
 Scope of delivery = Retention packaging with attached transport box
 1 unit

New!

Article code	Version
FL 160801 Q	NORMLine 50, PU film 50 microns
FL 160801 ESQ	ESDLine 50, PU film ESD 50 microns
FL 160801 ECQ	ECOLine 50, PE film 50 microns

Applications: smartphones, hard drives, small devices, circuit boards
 Max. product weight: up to 750 gr.

The indicated max. weights are approximate values and can vary depending on the product to be shipped.

The one-piece retention packaging



Maximum product size: **180 x 110 x 50 mm**

Product data

Overall dimensions 220 x 177 x 90 mm
 Quality B 1.50
 Scope of delivery = Retention packaging with attached transport box
 1 unit

Article code

Version

FL 181105 Q	NORMLine 50, PU film 50 microns
FL 181105 ESQ	ESDLine 50, PU film ESD 50 microns
FL 181105 ECQ	ECOLine 50, PE film 50 microns

Applications: hard disk drives, disk drives, small devices, displays
 Max. product weight: up to 2000 gr.



Maximum product size: **180 x 120 x 60 mm**

Product data

Overall dimensions 210 x 170 x 120 mm
 Quality E 1.40
 Scope of delivery = Retention packaging with attached transport box
 1 unit

Article code

Version

FL 181206 Q	NORMLine 50, PU film 50 microns
FL 181206 ESQ	ESDLine 50, PU film ESD 50 microns
FL 181206 ECQ	ECOLine 50, PE film 50 microns

Applications: small devices, instruments, displays
 Max. product weight: up to 2000 gr.



Maximum product size: **180 x 180 x 40 mm**

Product data

Overall dimensions 212 x 211 x 86 mm
 Quality B 1.50
 Scope of delivery = Retention packaging with attached transport box
 1 unit

Article code

Version

FL 181804 Q	NORMLine 50, PU film 50 microns
FL 181804 ESQ	ESDLine 50, PU film ESD 50 microns
FL 181804 ECQ	ECOLine 50, PE film 50 microns

Applications: controllers, instruments, sensors, displays
 Max. product weight: up to 2000 gr.

The indicated max. weights are approximate values and can vary depending on the product to be shipped.

The one-piece retention packaging



Maximum product size: **190 x 120 x 30 mm**

Product data

Overall dimensions 250 x 151 x 57 mm
 Quality E 1.40
 Scope of delivery = Retention packaging with attached transport box
 1 unit

Article code	Version
FL 191203 Q	NORMLine 50, PU film 50 microns
FL 191203 ESQ	ESDLine 50, PU film ESD 50 microns
FL 191203 ECQ	ECOLine 50, PE film 50 microns

Applications: hard disk drives, small devices, printed circuit boards
 Max. product weight: up to 1000 gr.



Maximum product size: **200 x 120 x 20 mm**

Product data

Overall dimensions 240 x 156 x 46 mm
 Quality E 1.40
 Scope of delivery = Retention packaging with attached transport box
 1 unit

Article code	Version
FL 201202 Q	NORMLine 50, PU film 50 microns
FL 201202 ESQ	ESDLine 50, PU film ESD 50 microns
FL 201202 ECQ	ECOLine 50, PE film 50 microns

Applications: small devices, printed circuit boards, hard disk drives
 Max. product weight: up to 1500 gr.



Maximum product size: **200 x 160 x 30 mm**

Product data

Overall dimensions 260 x 200 x 72 mm
 Quality B 1.50
 Scope of delivery = Retention packaging with attached transport box
 1 unit

Article code	Version
FL 201603 Q	NORMLine 50, PU film 50 microns
FL 201603 ESQ	ESDLine 50, PU film ESD 50 microns
FL 201603 ECQ	ECOLine 50, PE film 50 microns

Applications: small devices, printed circuit boards, hard disk drives
 Max. product weight: up to 1500 gr.

The indicated max. weights are approximate values and can vary depending on the product to be shipped.

The one-piece retention packaging



FL 241607 Q

Maximum product size: **240 x 160 x 70 mm**

Product data

Overall dimensions 286 x 225 x 120 mm

Quality B 1.50

Scope of delivery = Retention packaging with
attached transport box
1 unit

Article code

Version

FL 241607 Q

NORMLine 50, PU film 50 microns

FL 241607 ESQ

ESDLine 50, PU film ESD 50 microns

FL 241607 ECQ

ECOLine 50, PE film 50 microns

Applications: small devices, displays, panels
Max. product weight: up to 2000 gr.



FL 241801 Q

Maximum product size: **240 x 180 x 10 mm**

Product data

Overall dimensions 342 x 230 x 49 mm

Quality E 1.50

Scope of delivery = Retention packaging with
attached transport box
1 unit

Article-code

Version

FL 241801 Q

NORMLine 50, PU film 50 microns

FL 241801 ESQ

ESDLine 50, PU film ESD 50 microns

FL 241801 ECQ

ECOLine 80, PE film 80 microns

Applications: Tablet-PCs, plates
Max. product weight: up to 1500 Gramm



FL 251805 Q

Maximum product size: **250 x 180 x 50 mm**

Product data

Overall dimensions 303 x 253 x 85 mm

Quality B 1.50

Scope of delivery = Retention packaging with
attached transport box
1 unit

Article code

Version

FL 251805 Q

NORMLine 50, PU film 50 microns

FL 251805 ESQ

ESDLine 50, PU film ESD 50 microns

FL 251805 ECQ

ECOLine 50, PE film 50 microns

Applications: small devices, instruments, plates, displays
Max. product weight: up to 2000 Gramm

The indicated max. weights are approximate values and can vary depending on the product to be shipped.

The one-piece retention packaging



FL 281805 Q

Maximum product size: **280 x 180 x 50 mm**

Product data

Overall dimensions 341 x 268 x 91 mm
Quality B 1.50
Scope of delivery = Retention packaging with attached transport box
1 unit

Article code

Version

FL 281805 Q	NORMLine 50, PU film 50 microns
FL 281805 ESQ	ESDLine 50, PU film ESD 50 microns
FL 281805 ECQ	ECOLine 50, PE film 50 microns

Applications: controllers, instruments, analyzer, displays
Max. product weight: up to 1500 gr.



FL 402503 Q

Maximum product size: **400 x 250 x 30 mm**

Product data

Overall dimensions 466 x 305 x 76 mm
Quality B 1.50
Scope of delivery = Retention packaging with attached transport box
1 unit

Article code

Version

FL 402503 Q	NORMLine 50, PU film 50 microns
FL 402503 ESQ	ESDLine 50, PU film ESD 50 microns
FL 402503 ECQ	ECOLine 50, PE film 50 microns

Applications: instruments, displays, printed circuit boards
Max. product weight: up to 2000 gr.

Emba-Quick[®] SK

The one-piece retention packaging
with self-adhesive closure

Application:

Light and flat products of up to 2.0 kg (normally),
requiring medium level protection

Features:

With transport box attached

The packaging will adapt to even the most unusual
product contours

With self-adhesive closure

Advantages:

Major storage space savings

High-speed packaging

The amount of packaging types is substantially reduced

No more closing material necessary





Now available with self-adhesive closure !

All-in-one: shipping box, protective device and sealing material

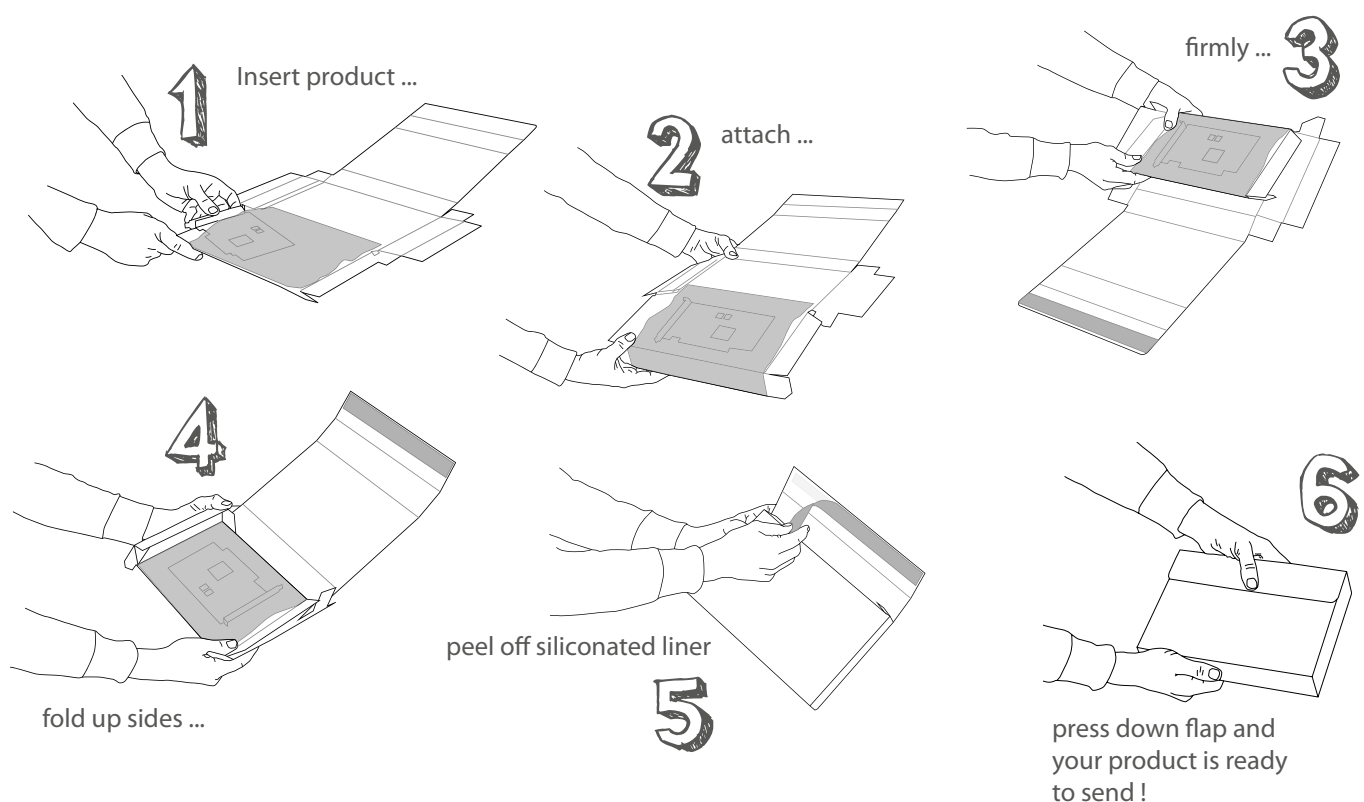
- Packed and ready to ship in 10 seconds
- No extra shipping carton necessary
- No additional sealing material necessary
- One-part system packaging
- Excellent shipping protection for your products
- Reduces process costs (procurement, storage, shipping)
- High-quality printing possible
- Environmentally friendly, as it can be disposed of along with waste paper
- Professional look



Emba-Quick® SK adapts optimally to the most varied product contours like a second skin.
New products from your company can often be packed immediately with existing packaging sizes.

Also product accessories can be packed securely in accessory compartments or hollow bottom.
Whether it's a manual, cables or remote controls, everything is securely fixed in position.

The technology



Now available with self-adhesive closure !



The immediate delivery programm

Maximum product size (mm)	Article Codes NORM- / ESD- / ECOLine	Max. product weight	Page
70 x 50 x 20 mm	FL 070502 Q- / EQ- / CQ-SK	ca. 0,4 kg	64
70 x 50 x 50 mm	FL 070505 Q- / EQ- / CQ-SK	ca. 0,8 kg	64
80 x 50 x 30 mm	FL 080503 Q- / EQ- / CQ-SK	ca. 0,8 kg	64
100 x 90 x 60 mm	FL 100906 Q- / EQ- / CQ-SK	ca. 1,0 kg	65
120 x 90 x 40 mm	FL 120904 Q- / EQ- / CQ-SK	ca. 1,0 kg	65
120 x 100 x 20 mm	FL 121002 Q- / EQ- / CQ-SK	ca. 1,0 kg	65
120 x 110 x 60 mm	FL 121106 Q- / EQ- / CQ-SK	ca. 1,0 kg	66
140 x 90 x 30 mm	FL 140903 Q- / EQ- / CQ-SK	ca. 1,0 kg	66
140 x 90 x 50 mm	FL 140905 Q- / EQ- / CQ-SK	ca. 1,0 kg	66
150 x 70 x 20 mm	FL 150702 Q- / EQ- / CQ-SK	ca. 0,8 kg	67
150 x 130 x 50 mm	FL 151305 Q- / EQ- / CQ-SK	ca. 1,0 kg	67
160 x 80 x 10 mm	FL 160801 Q- / EQ- / CQ-SK	ca. 0,7 kg	67
180 x 110 x 50 mm	FL 181105 Q- / EQ- / CQ-SK	ca. 2,0 kg	68
180 x 120 x 60 mm	FL 181206 Q- / EQ- / CQ-SK	ca. 2,0 kg	68
180 x 180 x 40 mm	FL 181804 Q- / EQ- / CQ-SK	ca. 2,0 kg	68
190 x 120 x 30 mm	FL 191203 Q- / EQ- / CQ-SK	ca. 1,0 kg	69
200 x 120 x 20 mm	FL 201202 Q- / EQ- / CQ-SK	ca. 1,5 kg	69
200 x 160 x 30 mm	FL 201603 Q- / EQ- / CQ-SK	ca. 1,5 kg	69
240 x 160 x 70 mm	FL 241607 Q- / EQ- / CQ-SK	ca. 2,0 kg	70
240 x 180 x 10 mm	FL 241801 Q- / EQ- / CQ-SK	ca. 1,5 kg	70
250 x 180 x 50 mm	FL 251805 Q- / EQ- / CQ-SK	ca. 2,0 kg	70
280 x 180 x 50 mm	FL 281805 Q- / EQ- / CQ-SK	ca. 1,5 kg	71
400 x 250 x 30 mm	FL 402503 Q- / EQ- / CQ-SK	ca. 2,0 kg	71

The one-piece retention packaging with self-adhesive closure



Product data

Overall dimensions 89 x 72 x 44 mm
 Quality E 1.40
 Scope of delivery = Retention packaging with attached transport box self-adhesive closure
 1 unit

Article code	Version
FL 070502 Q SK	NORMLine 50, PU film 50 microns
FL 070502 EQ SK	ESDLine 50, PU film ESD 50 microns
FL 070502 CQ SK	ECOLine 50, PE film 50 microns

Maximum product size: **70 x 50 x 20 mm**

Applications: printed circuit boards, probes, sensors
 Max. product weight: up to 400 gr.



Product data

Overall dimensions 106 x 92 x 78 mm
 Quality E 1.40
 Scope of delivery = Retention packaging with attached transport box self-adhesive closure
 1 unit

Article-code	Version
FL 070505 Q SK	NORMLine 50, PU film 50 microns
FL 070505 EQ SK	ESDLine 50, PU film ESD 50 microns
FL 070505 CQ SK	ECOLine 50, PE film 50 microns

Maximum product size: **70 x 50 x 50 mm**

Applications: printed circuit boards, probes, sensors
 Max. product weight: up to 800 gr.



Product data

Overall dimensions 107 x 84 x 66 mm
 Quality E 1.40
 Scope of delivery = Retention packaging with attached transport box self-adhesive closure
 1 unit

Article code	Version
FL 080503 Q SK	NORMLine 50, PU film 50 microns
FL 080503 EQ SK	ESDLine 50, PU film ESD 50 microns
FL 080503 CQ SK	ECOLine 50, PE film 50 microns

Maximum product size: **80 x 50 x 30 mm**

Applications: printed circuit boards, probes, sensors
 Max. product weight: up to 800 gr.

The indicated max. weights are approximate values and can vary depending on the product to be shipped.

The one-piece retention packaging with self-adhesive closure



Maximum product size: **100 x 90 x 60 mm**

Product data

Overall dimensions 132 x 136 x 102 mm
 Quality B 1.30
 Scope of delivery = Retention packaging with
 attached transport box
 self-adhesive closure
 1 unit

Article code	Version
FL 100906 Q SK	NORMLine 50, PU film 50 microns
FL 100906 EQ SK	ESDLine 50, PU film ESD 50 microns
FL 100906 CQ SK	ECOLine 50, PE film 50 microns

Applications: controllers, displays, sensors
 Max. product weight: up to 1000 gr.



Maximum product size: **120 x 90 x 40 mm**

Product data

Overall dimensions 159 x 121 x 85 mm
 Quality E 1.40
 Scope of delivery = Retention packaging with
 attached transport box
 self-adhesive closure
 1 unit

Article-code	Version
FL 120904 Q SK	NORMLine 50, PU film 50 microns
FL 120904 EQ SK	ESDLine 50, PU film ESD 50 microns
FL 120904 CQ SK	ECOLine 50, PE film 50 microns

Applications: controllers, displays, sensors
 Max. product weight: up to 1000 gr.



Maximum product size: **120 x 100 x 20 mm**

Product data

Overall dimensions 170 x 145 x 47 mm
 Quality E 1.40
 Scope of delivery = Retention packaging with
 attached transport box
 self-adhesive closure
 1 unit

Article code	Version
FL 121002 Q SK	NORMLine 50, PU film 50 microns
FL 121002 EQ SK	ESDLine 50, PU film ESD 50 microns
FL 121002 CQ SK	ECOLine 50, PE film 50 microns

Applications: Relay, plates
 Max. product weight: up to 1000 gr.

The indicated max. weights are approximate values and can vary depending on the product to be shipped.

The one-piece retention packaging with self-adhesive closure



Maximum product size: **120 x 110 x 60 mm**

Product data

Overall dimensions 160 x 136 x 109 mm
 Quality E 1.40
 Scope of delivery = Retention packaging with attached transport box
 self-adhesive closure
 1 unit

Article code

Version

FL 121106 Q SK	NORMLine 50, PU film 50 microns
FL 121106 EQ SK	ESDLine 50, PU film ESD 50 microns
FL 121106 CQ SK	ECOLine 50, PE film 50 microns

Applications: controllers, displays, sensors
 Max. product weight: up to 1000 gr.



Maximum product size: **140 x 90 x 30 mm**

Product data

Overall dimensions 180 x 130 x 71 mm
 Quality B 1.30
 Scope of delivery = Retention packaging with attached transport box
 self-adhesive closure
 1 unit

Article-code

Version

FL 140903 Q SK	NORMLine 50, PU film 50 microns
FL 140903 EQ SK	ESDLine 50, PU film ESD 50 microns
FL 140903 CQ SK	ECOLine 80, PE film 80 microns

Applications: controllers, displays, sensors
 Max. product weight: up to 1000 gr.



Maximum product size: **140 x 90 x 50 mm**

Product data

Overall dimensions 178 x 135 x 90 mm
 Quality B 1.30
 Scope of delivery = Retention packaging with attached transport box
 self-adhesive closure
 1 unit

Article code

Version

FL 140905 Q SK	NORMLine 50, PU film 50 microns
FL 140905 EQ SK	ESDLine 50, PU film ESD 50 microns
FL 140905 CQ SK	ECOLine 50, PE film 50 microns

Applications: controllers, displays, sensors
 Max. product weight: up to 1000 gr.

The indicated max. weights are approximate values and can vary depending on the product to be shipped.

The one-piece retention packaging with self-adhesive closure



Maximum product size: **150 x 70 x 20 mm**

Product data

Overall dimensions 200 x 107 x 49 mm
Quality E 1.50
Scope of delivery = Retention packaging with attached transport box self-adhesive closure
1 unit

Article code	Version
FL 150702 Q SK	NORMLine 50, PU film 50 microns
FL 150702 EQ SK	ESDLine 50, PU film ESD 50 microns
FL 150702 CQ SK	ECOLine 50, PE film 50 microns

Applications: plates, small devices
Max. product weight: up to 750 gr.



Maximum product size: **150 x 130 x 50 mm**

Product data

Overall dimensions 183 x 168 x 83 mm
Quality B 1.30
Scope of delivery = Retention packaging with attached transport box self-adhesive closure
1 unit

Article-code	Version
FL 151305 Q SK	NORMLine 50, PU film 50 microns
FL 151305 EQ SK	ESDLine 50, PU film ESD 50 microns
FL 151305 CQ SK	ECOLine 50, PE film 50 microns

Applications: controllers, instruments, sensors, displays
Max. product weight: up to 1000 gr.



Maximum product size: **160 x 80 x 10 mm**

Product data

Overall dimensions 195 x 110 x 50 mm
Quality E 1.40
Scope of delivery = Retention packaging with attached transport box self-adhesive closure
1 unit

Article code	Version
FL 160801 Q SK	NORMLine 50, PU film 50 microns
FL 160801 EQ SK	ESDLine 50, PU film ESD 50 microns
FL 160801 CQ SK	ECOLine 50, PE film 50 microns

Applications: smartphones, hard drives, small devices, circuit boards
Max. product weight: up to 750 gr.

The indicated max. weights are approximate values and can vary depending on the product to be shipped.

The one-piece retention packaging with self-adhesive closure



Maximum product size: **180 x 110 x 50 mm**

Product data

Overall dimensions 220 x 177 x 90 mm
 Quality B 1.50
 Scope of delivery = Retention packaging with
 attached transport box
 self-adhesive closure
 1 unit

Article code	Version
FL 181105 Q SK	NORMLine 50, PU film 50 microns
FL 181105 EQ SK	ESDLine 50, PU film ESD 50 microns
FL 181105 CQ SK	ECOLine 50, PE film 50 microns

Applications: hard disk drives, disk drives, small devices, displays
 Max. product weight: up to 2000 gr.



Maximum product size: **180 x 120 x 60 mm**

Product data

Overall dimensions 210 x 170 x 120 mm
 Quality E 1.40
 Scope of delivery = Retention packaging with
 attached transport box
 self-adhesive closure
 1 unit

Article-code	Version
FL 181206 Q SK	NORMLine 50, PU film 50 microns
FL 181206 EQ SK	ESDLine 50, PU film ESD 50 microns
FL 181206 CQ SK	ECOLine 50, PE film 50 microns

Applications: small devices, instruments, displays
 Max. product weight: up to 2000 gr.



Maximum product size: **180 x 180 x 40 mm**

Product data

Overall dimensions 212 x 211 x 86 mm
 Quality B 1.50
 Scope of delivery = Retention packaging with
 attached transport box
 self-adhesive closure
 1 unit

Article code	Version
FL 181804 Q SK	NORMLine 50, PU film 50 microns
FL 181804 EQ SK	ESDLine 50, PU film ESD 50 microns
FL 181804 CQ SK	ECOLine 50, PE film 50 microns

Applications: controllers, instruments, sensors, displays
 Max. product weight: up to 2000 gr.

The indicated max. weights are approximate values and can vary depending on the product to be shipped.

The one-piece retention packaging with self-adhesive closure



Maximum product size: **190 x 120 x 30 mm**

Product data

Overall dimensions 250 x 151 x 57 mm
 Quality E 1.40
 Scope of delivery = Retention packaging with attached transport box self-adhesive closure
 1 unit

Article code	Version
FL 191203 Q SK	NORMLine 50, PU film 50 microns
FL 191203 EQ SK	ESDLine 50, PU film ESD 50 microns
FL 191203 CQ SK	ECOLine 50, PE film 50 microns

Applications: hard disk drives, small devices, printed circuit boards
 Max. product weight: up to 1000 gr.



Maximum product size: **200 x 120 x 20 mm**

Product data

Overall dimensions 240 x 156 x 46 mm
 Quality E 1.40
 Scope of delivery = Retention packaging with attached transport box self-adhesive closure
 1 unit

Article-code	Version
FL 201202 Q SK	NORMLine 50, PU film 50 microns
FL 201202 EQ SK	ESDLine 50, PU film ESD 50 microns
FL 201202 CQ SK	ECOLine 50, PE film 50 microns

Applications: small devices, printed circuit boards, hard disk drives
 Max. product weight: up to 1500 gr.



Maximum product size: **200 x 160 x 30 mm**

Product data

Overall dimensions 260 x 200 x 72 mm
 Quality B 1.50
 Scope of delivery = Retention packaging with attached transport box self-adhesive closure
 1 unit

Article code	Version
FL 201603 Q SK	NORMLine 50, PU film 50 microns
FL 201603 EQ SK	ESDLine 50, PU film ESD 50 microns
FL 201603 CQ SK	ECOLine 50, PE film 50 microns

Applications: small devices, printed circuit boards, hard disk drives
 Max. product weight: up to 1500 gr.

The indicated max. weights are approximate values and can vary depending on the product to be shipped.

The one-piece retention packaging with self-adhesive closure



FL 241607 Q SK

Maximum product size: **240 x 160 x 70 mm**

Product data

Overall dimensions 286 x 225 x 120 mm

Quality B 1.50

Scope of delivery = Retention packaging with
attached transport box
self-adhesive closure
1 unit

Article code

Version

FL 241607 Q SK

NORMLine 50, PU film 50 microns

FL 241607 EQ SK

ESDLine 50, PU film ESD 50 microns

FL 241607 CQ SK

ECOLine 50, PE film 50 microns

Applications: small devices, displays, panels
Max. product weight: up to 2000 gr.



FL 241801 Q SK

Maximum product size: **240 x 180 x 10 mm**

Product data

Overall dimensions 342 x 230 x 49 mm

Quality E 1.50

Scope of delivery = Retention packaging with
attached transport box
self-adhesive closure
1 unit

Article-code

Version

FL 241801 Q SK

NORMLine 50, PU film 50 microns

FL 241801 EQ SK

ESDLine 50, PU film ESD 50 microns

FL 241801 CQ SK

ECOLine 80, PE film 80 microns

Applications: Tablet-PCs, plates
Max. product weight: up to 1500 Gramm



FL 251805 Q SK

Maximum product size: **250 x 180 x 50 mm**

Product data

Overall dimensions 303 x 253 x 85 mm

Quality B 1.50

Scope of delivery = Retention packaging with
attached transport box
self-adhesive closure
1 unit

Article code

Version

FL 251805 Q SK

NORMLine 50, PU film 50 microns

FL 251805 EQ SK

ESDLine 50, PU film ESD 50 microns

FL 251805 CQ SK

ECOLine 50, PE film 50 microns

Applications: small devices, instruments, plates, displays
Max. product weight: up to 2000 Gramm

The indicated max. weights are approximate values and can vary depending on the product to be shipped.

The one-piece retention packaging with self-adhesive closure



Maximum product size: **280 x 180 x 50 mm**

Product data

Overall dimensions 341 x 268 x 91 mm
 Quality B 1.50
 Scope of delivery = Retention packaging with
 attached transport box
 self-adhesive closure
 1 unit

Article code	Version
FL 281805 Q SK	NORMLine 50, PU film 50 microns
FL 281805 EQ SK	ESDLine 50, PU film ESD 50 microns
FL 281805 CQ SK	ECOLine 50, PE film 50 microns

Applications: controllers, instruments, analyzer, displays
 Max. product weight: up to 1500 gr.



Maximum product size: **400 x 250 x 30 mm**

Product data

Overall dimensions 466 x 305 x 76 mm
 Quality B 1.50
 Scope of delivery = Retention packaging with
 attached transport box
 self-adhesive closure
 1 unit

Article-code	Version
FL 402503 Q SK	NORMLine 50, PU film 50 microns
FL 402503 EQ SK	ESDLine 50, PU film ESD 50 microns
FL 402503 CQ SK	ECOLine 50, PE film 50 microns

Applications: instruments, displays, printed circuit boards
 Max. product weight: up to 2000 gr.



Suspension Packaging

best protection of fragile goods
of up to 35.0 Kg
Emba-Swing®
transported „floating on air“
reusable
protection against shock and vibration
storage space reduction
quick handling

Emba-Swing®

The Suspension Packaging



**Application:**

Fragile goods of up to 35.0 kg.

Features:

The product is suspended between two cushions during the transport.

Reusable packaging system.

Advantages:

Highest protection level against shock and vibration.

Storage space reduction as the packaging can quickly be set upright.

The suspension packaging

Emba-Swing® The suspension packaging

- high-level protection for fragile products against shock and vibration
- products are transported as if they were "floating on air"
- quick handling
- storage space reduction compared with foam solutions
- reduction of process costs (procurement, storing, shipment)
- reusable
- environment-friendly, can be disposed of with waste paper
- professional appearance
- economical due to standard program (no tool costs)



The method

The highly flexible but practically tear-free stretch film clings perfectly to the different product contours. Clamping between two suspension

cushions means that the product will be stored as if it was "floating on air" during the transport. Even if the box is dropped on its side walls the product will remain in position.



Application examples

Emba-Swing® adapts optimally to the most varied product contours like a second skin. New products from your company can often be packed immediately with existing packaging sizes. Also products of different sizes fit into the same-sized packaging solution.

Also product accessories can be packed securely in accessory compartments. Whether it's a manual, cables or remote controls, everything is securely fixed in position.

In addition to our immediate delivery program listed in the table below we also offer existing special packaging as well as new developments according to your individual needs.



The immediate delivery program

Maximum product surface (mm)	Article code	Height of cushion	Max. product weight	Page
120 x 70 mm	SW 120750	50 mm	ca. 3,0 kg	78
130 x 130 mm	SW 131340	40 mm	ca. 1,0 kg	78
160 x 100 mm	SN 161003	30 mm	ca. 1,0 kg	78
170 x 170 mm	SW 171770	70 mm	ca. 3,0 kg	79
190 x 150 mm	SW 191560	60 mm	ca. 3,0 kg	79
200 x 100 mm	SW 201050	50 mm	ca. 1,5 kg	79
200 x 110 mm	SW 201140	40 mm	ca. 1,5 kg	80
240 x 150 mm	SW 241560	60 mm	ca. 2,0 kg	80
250 x 180 mm	SW 251880	80 mm	ca. 4,0 kg	80
250 x 250 mm	SW 252560	60 mm	ca. 5,0 kg	81
280 x 180 mm	SW 281880	80 mm	ca. 6,0 kg	81
280 x 230 mm	SW 282380	80 mm	ca. 8,0 kg	81
290 x 270 mm	SW 292790	90 mm	ca. 10 kg	82
300 x 70 mm	SN 300760	60 mm	ca. 2,0 kg	82
300 x 200 mm	SW 302060	60 mm	ca. 6,0 kg	82
300 x 200 mm	SW 302080	80 mm	ca. 10 kg	83
300 x 300 mm	SW 303070	70 mm	ca. 7,0 kg	83
340 x 330 mm	SW 3433100	100 mm	ca. 15 kg	83
400 x 300 mm	SW 4030100	100 mm	ca. 15 kg	84
450 x 440 mm	SW 454490	90 mm	ca. 12 kg	84
450 x 440 mm	SW 4544180	180 mm	ca. 30 kg	84
460 x 460 mm	SW 4646150	150 mm	ca. 20 kg	85
500 x 300 mm	SW 5030120	120 mm	ca. 20 kg	85
500 x 400 mm	SW 5040160	160 mm	ca. 25 kg	85
500 x 500 mm	SW 5050160	160 mm	ca. 30 kg	86

Available in sets of 50 and more (2 cushions, 1 box). Special sizes on request.
All boxes have additional adjustable heights. For modification requests call us.

The suspension packaging



Max. product surface : **120 x 70 mm**

Product data

Overall transport box dimensions

208 x 158 x 117 mm

Fefco 0201 slotted-type box with top and bottom flaps
Quality B 1.30

Scope of delivery = Suspension cushion 2 units, Transport box 1 unit

Article-code

Version

SW 120750 S

NORMLine 50, PU Folie 50 microns

SW 120750 ESDS

ESDLine 50, PU Folie ESD 50 microns

SW 120750 EC6S

ECOLine, PE Folie 60 microns

Applications: Sensors, displays, small devices

Max. product weight: up to 3 kg



Max. product surface : **130 x 130 mm**

Product data

Overall transport box dimensions

200 x 200 x 104 mm

Fefco 0201 slotted-type box with top and bottom flaps
Quality C 1.30

Scope of delivery = Suspension cushion 2 units,
Transport box 1 unit

Article-code

Version

SW 131340 S

NORMLine 50, PU film 50 microns

SW 131340 ESDS

ESDLine 50, PU film ESD 50 microns

SW 131340 EC8S

ECOLine, PE film 80 microns

Applications: small devices, instruments, displays

Max. product weight: up to 1.0 kg



Max. product surface : **160 x 100 x 30 mm**

Product data

Overall transport box dimensions

242 x 172 x 78 mm

Fefco 0211 tuck-lid folding box
Quality E 1.20

Scope of delivery = Clam shell 1 unit,
Transport box 1 unit

Article-code

Version

SN 161003 S

NORMLine 75, PU film 75 microns

SN 161003 ESDS

ESDLine 75, PU film ESD 75 microns

Applications: small devices, printed circuit boards

Max. product weight: up to 1.0 kg

The indicated max. weights are approximate values and can vary depending on the product to be shipped.

The suspension packaging



SW 171770

Max. product surface : **170 x 170 mm**

Product data

Overall transport box dimension

236 x 226 x 230 / 190 / 150 mm

Fefco 0201 slotted-type box with top and bottom flaps and additional crease for height of 40 mm, Quality B 1.30

Scope of delivery = Suspension cushion 2 units, Transport box 1 unit

Article-code	Version
SW 171770 S	NORMLine 75, PU film 75 microns
SW 171770 ESDS	ESDLine 75, PU film ESD 75 microns
SW 171770 EC8S	ECOLine, PE film 80 microns
SW 171770 MS	MAXILine 100, PU 100 microns

Applications: small devices, displays, panels, mechatronics
Max. product weight: up to 3 kg



SW 191560

Max. product surface : **190 x 150 mm**

Product data

Overall transport box dimension

311 x 256 x 187 / 137 mm

Fefco 0201 slotted-type box with top and bottom flaps and additional crease for height of 50 mm, Quality B 1.30

Scope of delivery = Suspension cushion 2 units, Transport box 1 unit

Article-code	Version
SW 191560 S	NORMLine 75, PU film 75 microns
SW 191560 ESDS	ESDLine 75, PU film ESD 75 microns
SW 191560 EC8S	ECOLine, PE film 80 microns
SW 191560 MS	MAXILine 125, PU 125 microns

Applications: small devices, displays, panels, mechatronics
Max. product weight: up to 3 kg



SW 201050

Max. product surface : **200 x 100 mm**

Product data

Overall transport box dimension 287x185x194/120mm

Fefco 0201 slotted-type box with top and bottom flaps and additional crease for height of 70 mm,

Quality C 1.30, Scope of delivery = Suspension cushion 2 units, Transport box 1 unit

Article-code	Version
SW 201050 S	NORMLine 75, PU film 75 microns
SW 201050 ESDS	ESDLine 75, PU film ESD 75 microns
SW 201050 EC8S	ECOLine, PE film 80 microns

Applications: small devices, displays, panels, mechatronics
Max. product weight: up to 1.5 kg

The indicated max. weights are approximate values and can vary depending on the product to be shipped.

The suspension packaging



Max. product surface : **200 x 110 mm**

Product data

Overall transport box dimension 300x200x150/100mm
Fefco 0201 slotted-type box with top and bottom flaps
and additional crease of 50 mm,
Quality C 1.30
Scope of delivery = Suspension cushion 2 units,
Transport box 1 unit

Article-code

Version

SW 201140 S

NORMLine 75, PU film 75 microns

SW 201140 ESDS

ESDLine 75, PU film ESD 75 microns

SW 201140 EC8S

ECOLine, PE film 80 microns

Applications: small devices, displays, mechatronics
Max. product weight: up to 1.5 kg



Max. product surface : **240 x 150 mm**

Product data

Overall transport box dimension 324x234x194/144mm
Fefco 0201 slotted-type box with top and bottom flaps
and additional crease of 50 mm,
Quality C 1.30
Scope of delivery = Suspension cushion 2 units,
Transport box 1 unit

Article-code

Version

SW 241560 S

NORMLine 75, PU film 75 microns

SW 241560 ESDS

ESDLine 75, PU film ESD 75 microns

SW 241560 EC8S

ECOLine, PE film 80 microns

Applications: disk drives, small devices, displays, mechatronics
Max. product weight: up to 2.0 kg



Max. product surface : **250 x 180 mm**

Product data

Overall transport box dimension 340x300x246/196mm
Fefco 0201 slotted-type box with top and bottom flaps
additional crease of 50 mm,
Quality C 1.30
Scope of delivery = Suspension cushion 2 units,
Transport box 1 unit

Article-code

Version

SW 251880 S

NORMLine 100, PU film 100 microns

SW 251880 ESDS

ESDLine 100, PU film ESD 100 microns

SW 251880 ESDS

MAXILine 150, PU film 150 microns

Applications: GPS units, 1 and 2 DIN car audio units, instruments.
Max. product weight: up to 4.0 kg

The indicated max. weights are approximate values and can vary depending on the product to be shipped.

The suspension packaging



SW 252560

Max. product surface : **250 x 250 mm**

Product data

Overall transport box dimension 334x334x218/148mm
Fefco 0201 slotted-type box with top and bottom flaps and additional crease of 70 mm,
Quality C 1.30
Scope of delivery = Suspension cushion 2 units,
Transport box 1 unit

Article-code	Version
SW 252560 S	NORMLine 100, PU film 100 microns
SW 252560 ESDS	ESDLine 100, PU film ESD 100 microns
SW 252560 EC8S	ECOLine, PE film 80 microns
SW 252560 MS	MAXILine 150, PU film 150 microns

Applications: small devices, displays, panels, mechatronics
Max. product weight: up to 5.0 kg



SW 281880

Max. product surface : **280 x 180 mm**

Product data

Overall transport box dimension
364 x 247 x 256 / 216 / 176 mm
Fefco 0201 slotted-type box with top and bottom flaps and additional crease of 40 mm, Quality C 1.30
Scope of delivery = Suspension cushion 2 units, transport box 1 unit

Article-code	Version
SW 281880 S	NORMLine 100, PU film 100 microns
SW 281880 ESDS	ESDLine 100, PU film ESD 100 microns
SW 281880 EC8S	ECOLine, PE film 80 microns
SW 281880 MS	MAXILine 150, PU film 150 microns

Applications: small devices, panels, mechatronics
Max. product weight: up to 6 kg



SW 282380

Max. product surface : **280 x 230 mm**

Product data

Overall transport box dimension 422x334x288/208mm
Fefco 0201 folding box with base, cover flaps and additional crease of 80 mm,
Quality BC 2.30
Scope of delivery = Suspension cushion 2 units,
Transport box 1 unit

Article-code	Version
SW 282380 S	NORMLine 100, PU film 100 microns
SW 282380 ESDS	ESDLine 100, PU film ESD 100 microns
SW 282380 MS	MAXILine, PU film 150 microns

Applications: small devices, displays, panels, mechatronics
Max. product weight: up to 8.0 kg

The indicated max. weights are approximate values and can vary depending on the product to be shipped.

The suspension packaging



Max. product surface : **290 x 270 mm**

Product data

Overall transport box dimension
472 x 439 x 398 / 308 / 218 mm
Fefco 0201 slotted-type box with top and bottom flaps
and additional crease of 2 x 90 mm,
Quality BC 2.30
Scope of delivery = Suspension cushion 2 units,
Transport box 1 unit

Article-code	Version
SW 292790 S	NORMLine 100, PU film 100 microns
SW 292790 ESDS	ESDLine 100, PU film ESD 100 microns
SW 292790 MS	MAXILine 150, PU film 150 microns

Applications: devices, panels
Max. product weight: up to 10.0 kg



Max. product surface : **300 x 70 x 60 mm**

Product data

Overall transport box dimension
152 x 142 x 380 mm
efco 0201 slotted-type box with top and bottom flaps
Quality B 1.40
Scope of delivery = Clam Shell 1 unit,
Transport box 1 unit

Article-code	Version
SN 300760 S	NORMLine 75, PU film 75 microns
SN 300760 ESDS	ESDLine 75, PU film ESD 75 microns
SN 300760 EC8S	ECOLine 80, PE film 80 microns

Applications: Wine bottle, analyzer
Max. product weight: up to 2 kg

**Module dimensions
for pallets!**



Max. product surface : **300 x 200 mm**

Product data

Overall transport box dimension
400 x 300 x 270-158 mm
Fefco 0201 slotted-type box with top and bottom flaps
and 3 additional creases,
Quality BC 2.20
Scope of delivery = Suspension cushion 2 units,
Transport box 1 unit

Article-code	Version
SW 302060 S	NORMLine 100, PU film 100 microns
SW 302060 ESDS	ESDLine 100, PU film ESD 100 microns
SW 302060 EC8S	ECOLine, PE film 80 microns
SW 302060 MS	MAXILine 150, PU film 150 microns

Applications: small devices, mechatronics
Max. product weight: up to 6.0 kg

The indicated max. weights are approximate values and can vary depending on the product to be shipped.

The suspension packaging

**Module dimensions
for pallets!**



SW 302080

Max. product surface : **300 x 200 mm**

Product data

Overall transport box dimension
400 x 300 x 270 - 158 mm
Fefco 0201 slotted-type box with top and bottom flaps
and 3 additional creases,
Quality BC 2.20
Scope of delivery = Suspension cushion 2 units,
Transport box 1 unit

Article-code	Version
SW 302080 S	NORMLine 100, PU film 100 microns
SW 302080 ESDS	ESDLine 100, PU film ESD 100 microns
SW 302080 EC8S	ECOLine, PE film 80 microns
SW 302080 MS	MAXILine 150, PU film 150 microns

Applications: small devices, mechatronics, drives
Max. product weight: up to 10.0 kg

**Module dimensions
for pallets!**



SW 303070

Max. product surface : **300 x 300 mm**

Product data

Overall transport box dimension
387 x 387 x 338 / 258 / 178 mm
Fefco 0201 slotted-type box with top and bottom flaps
and additional crease of 2 x 80 mm,
Quality BC 2.30
Scope of delivery = Suspension cushion 2 units,
Transport box 1 unit

Article-code	Version
SW 303070 S	NORMLine 100, PU film 100 microns
SW 303070 ESDS	ESDLine 100, PU film ESD 100 microns
SW 303070 EC8S	ECOLine, PE film 80 microns
SW 303070 MS	MAXILine 150, PU film 150 microns

Applications: small devices, panels, mechatronics
Max. product weight: up to 7.0 kg



SW 3433100

Max. product surface : **340 x 330 mm**

Product data

Overall transport box dimension 506x486x330/240 mm
Fefco 0201 slotted-type box with top and bottom flaps
and additional crease of 90 mm,
Quality BC 2.30
Scope of delivery = Suspension cushion 2 units,
Transport box 1 unit

Article-code	Version
SW 3433100 S	NORMLine 100, PU film 100 microns
SW 3433100 ESDS	ESDLine 100, PU film ESD 100 microns
SW 3433100 MS	MAXILine 150, PU film 150 microns

Applications: devices, mechatronics
Max. product weight: up to 15.0 kg

The indicated max. weights are approximate values and can vary depending on the product to be shipped.

The suspension packaging



Max. product surface : **400 x 300 mm**

Product data

Overall transport box dimension 500x400x330/285/240mm
Fefco 0201 slotted-type box with top and bottom flaps
and additional crease of 2 x 45 mm,
Quality BC 2.30
Scope of delivery = Suspension cushion 2 units,
Transport box 1 unit

Article-code

Version

SW 4030100 S

NORMLine 100, PU film 100 microns

SW 4030100 ESDS

ESDLine 100, PU film ESD 100 microns

SW 4030100 MS

MAXILine 150, PU film 150 microns

Applications: devices, mechatronics
Max. product weight: up to 15.0 kg



Max. product surface : **450 x 440 mm**

Product data

Overall transport box dimensions
597 x 534 x 228 mm
Fefco 0201 slotted-type box with top and bottom flaps
Quality BC 2.40
Scope of delivery = Suspension cushion 2 units,
Transport box 1 unit

Article-code

Version

SW 454490 S

NORMLine 100, PU film 100 microns

SW 454490 ESDS

ESDLine 100, PU film ESD 100 microns

SW 454490 MS

MAXILine, PU film 150 microns

Applications: devices, panels, mechatronics
Max. product weight: up to 12.0 kg



Max. product surface: **450 x 440 mm**

Product data

Overall transport box dimension
597 x 534 x 598 / 498 / 398 mm
Fefco 0201 slotted-type box with top and bottom flaps
and additional creases of 2 x 100 mm,
Quality BC 2.40
Scope of delivery = Suspension cushion 2 units,
Transport box 1 unit

Article-code

Version

SW 4544180 S

NORMLine 100, PU film 100 microns

SW 4544180 ESDS

ESDLine 100, PU film ESD 100 microns

SW 4544180 MS

MAXILine 150, PU film 150 microns

Applications: 17" CRT monitors, instruments, mechatronics
Max. product weight: up to 30.0 kg

The indicated max. weights are approximate values and can vary depending on the product to be shipped.

The suspension packaging



SW 4646150

Max. product surface : **460 x 460 mm**

Product data

Overall transport box dimensions
610 x 568 x 328 mm
Fefco 0201 slotted-type box with top and bottom flaps
Quality BC 2.30
Scope of delivery = Suspension cushion 2 units,
Transport box 1 unit

Article-code

Version

SW 4646150 S

NORMLine 100, PU film 100 microns

SW 4646150 ESDS

ESDLine 100, PU film ESD 100 microns

SW 4646150 MS

MAXILine 150, PU film 150 microns

Applications: displays up to 19", instruments
Max. product weight: up to 20.0 kg



SW 5030120

Max. product surface : **500 x 300 mm**

Product data

Overall transport box dimension
644 x 404 x 483 / 433 / 383 / 333 / 283 mm
Fefco 0201 slotted-type box with top and bottom flaps
and additional creases of 4 x 50 mm,
Quality BC 2.40
Scope of delivery = Suspension cushion 2 units,
Transport box 1 unit

Article-code

Version

SW 5030120 S

NORMLine 100, PU film 100 microns

SW 5030120 ESDS

ESDLine 100, PU film ESD 100 microns

SW 5030120 MS

MAXILine 150, PU film 150 microns

Applications: 19" devices, control panels, instruments
Max. product weight: up to 20.0 kg



SW 5040160

Max. product surface : **500 x 400 mm**

Product data

Overall transport box dimension
648 x 504 x 558 / 508 / 458 / 408 / 358 mm
Fefco 0201 slotted-type box with top and bottom flaps
and additional creases of 4 x 50 mm,
Quality BC 2.40
Scope of delivery = Suspension cushion 2 units,
Transport box 1 unit

Article-code

Version

SW 5040160 S

NORMLine 100, PU film 100 microns

SW 5040160 ESDS

ESDLine 100, PU film ESD 100 microns

SW 5040160 MS

MAXILine, PU film 150 microns

Applications: 19" devices, instruments
Max. product weight: up to 25.0 kg

The indicated max. weights are approximate values and can vary depending on the product to be shipped.



SW 5050160

Max. product surface : **500 x 500 mm**

Product data

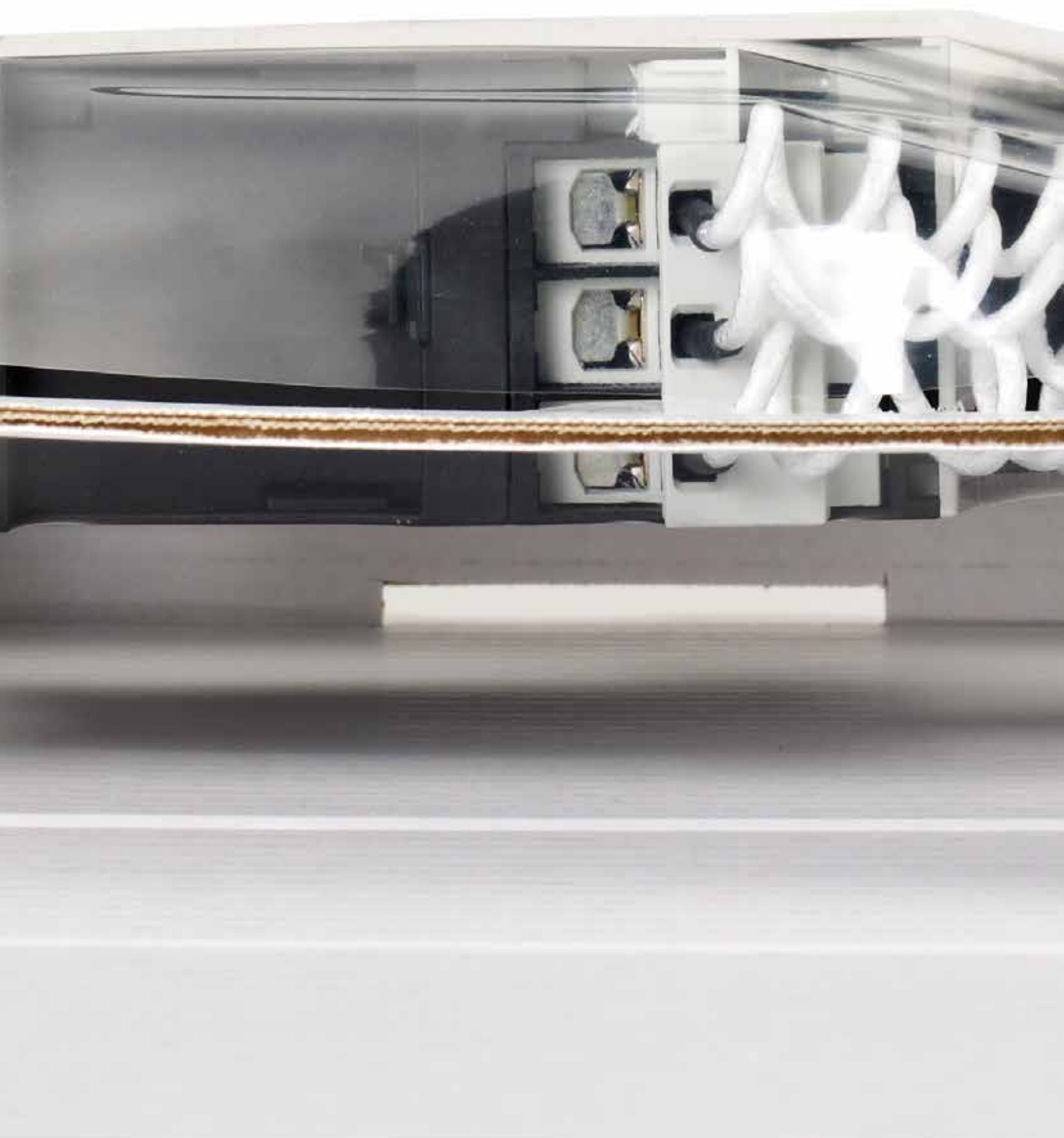
Overall transport box dimension
648 x 604 x 558 / 508 / 458 / 408 / 358 mm
Fefco 0201 slotted-type box with top and bottom flaps
and additional creases of 4 x 50 mm,
Quality BC 2.50
Scope of delivery = Suspension cushion 2 units,
Transport box 1 unit

Article-code	Version
SW 5050160 S	NORMLine 100, PU film 100 microns
SW 5050160 ESDS	ESDLine 100, PU film ESD 100 microns
SW 5050160 MS	MAXILine 150, PU film 150 microns

Applications: 19" to 21" CRT monitors, instruments, mechatronics
Max. product weight: up to 30.0 kg



Attention: Here comes
something special !



Emba-One®

Different Products - One Solution

The best from 2 systems combined !

Different Products

hybrid

fixing

cushioning

suspended transport

Emba-One® OneSolution

reusable

fast, simple packaging

protection against shocks / vibrations

reduction of storage costs

product cushioning / fixing at the same time

Emba-One[®]

Different Products - One Solution

The best from 2 systems combined !





Properties

- Product cushioning and product fixing at the same time
- Perfectly adapts to various product contours and heights
- Suspended transport
- Only one inner component necessary
- Also with attached transport box possible

Benefits

- Reduction in the variety of packaging
- Replaces expensive cushion systems
- Reusable packaging system
- Offers high protection against shocks and vibrations

Uses

- Reduction of labour costs
- Reduction of storage costs
- A solution for lots of products
- Reduce packaging costs

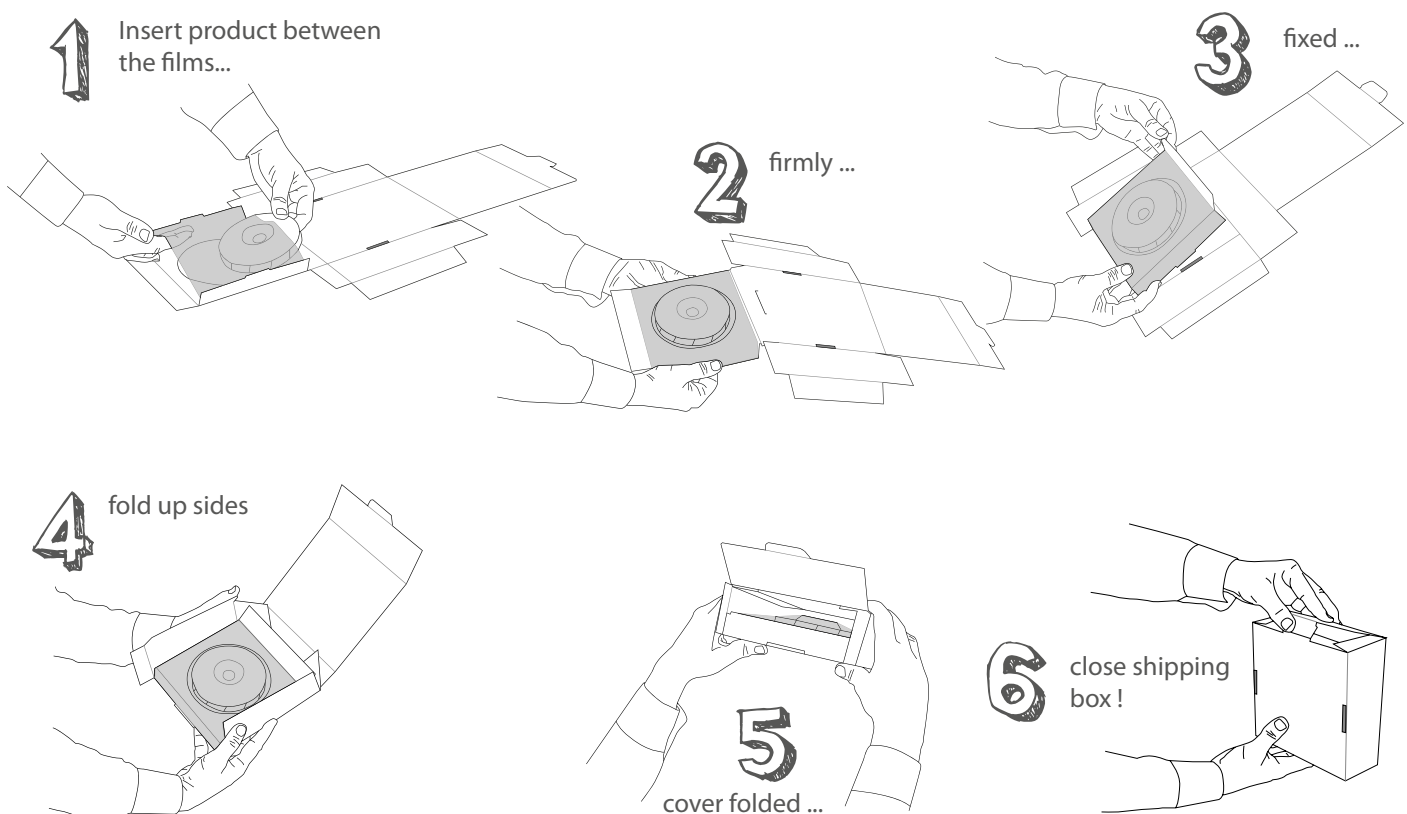
Different Products – One Solution

German registered design DE 20 2011 109 294

Thanks to **Emba One®**, you can be just as varied as your products themselves. This flexible systems is compact and holds your product firmly in position during transit. With this process, **Emba One®** combines the good properties of product cushioning and product fixing.



Emba One® can individually adapt to even the most varied product contours. Due to the „suspended delivery“, there is a very high degree of protection against shocks and vibrations. Thanks to the clever construction, you only need an inner section (standard systems usually require 2-3 parts). The packaging time is considerably reduced. In the process, flat and also greater product dimensions can be sent in the same packaging.



The best from 2 systems combined !

No time-consuming folding as in previous systems is required here. Your product is **quickly** and **simply packaged** so that it is ready for sending.

Reduce your storage volumes as far fewer packaging sizes are needed.

Emba One® means that you can benefit from an **environmentally friendly** and **reusable** packaging system and automatically make a contribution to the environment. **The carbon footprint is considerably less** than in the case of standard packaging (e.g. foam). The packaging can be fed unseparated into the waste paper cycle.



Properties

- Product cushioning and product fixing at the same time
- Perfectly adapts to various product contours and heights
- Suspended transport
- Only one inner component necessary
- Also with attached transport box possible

Benefits

- Reduction in the variety of packaging
- Replaces expensive cushion systems
- Reusable packaging system
- Offers high protection against shocks and vibrations

Uses

- Reduction of labour costs
- Reduction of storage costs
- A solution for lots of products
- Reduce packaging costs



Version:
Single insert.

The immediate delivery program

Maximum product size (mm)	Article code
120 x 100 x 40 mm	O 121004 Q / ESQ
200 x 100 x 60 mm	O 201006 S / ESDS

NORM Line

The universal film which covers everything. The material is based on PU and clings perfectly to the different product contours. Depending on the product line this film type comes in different standard material thicknesses.

Features:

- highly flexible
- unprecedented shrink behaviour after stretching
- material based on PU



MAXI Line

For very flat or heavy products with very high surface weight.

Features:

- film with 100 % higher strength compared to NORM Line
- material based on PU
- higher tensile force to securely hold your product in position



ECO Line

The better-priced film type for light and flat products.

The use of a special stretch film on a cheaper material basis reduces the total price of this packaging even further.

This low-priced film has a high retention force with very good stretch properties and shrink behaviour after stretching.

Ideally suited for one-way shipping with high throughput volumes.

Features:

- strong film and identical corrugated cardboard of high quality
- material based on PE



ESD Line

In order to protect your products from short-circuits due to electrostatic discharge we have developed a new film for the most demanding requirements.

Features:

- antistatic film with 10^8 to 10^{11} Ohm surface resistance and for voltages of up to 50 Volts.
- for fast elimination of electric current to prevent damage
- Material based on PU
- corrugated cardboard with ESD protection (graphite coated) upon request



VCI Line

For corrosion protection of your products. When the packaging is closed a fine anti-corrosive vapour builds up on the VCI stretch film.

The vapour then covers the product evenly with an absorption film.

Features:

- special VCI stretch film – developed in cooperation with corrosion protection specialist company EXCOR® Korrosionsforschung GmbH, Dresden, Germany
- corrosion protection feature in accordance with standard TL 8135-0043, Level 3
- reliable protection for various corrosion-sensitive metal products with various contours
- designed for ferrous metals, chrome, nickel, aluminium alloys with silicon, partly galvanised steel, cast iron of types GGL and GGG
- effective period of up to 2 years (in case of proper storage)
- material based on PE



VCI-retention packaging

the corrosion protection solution

Features

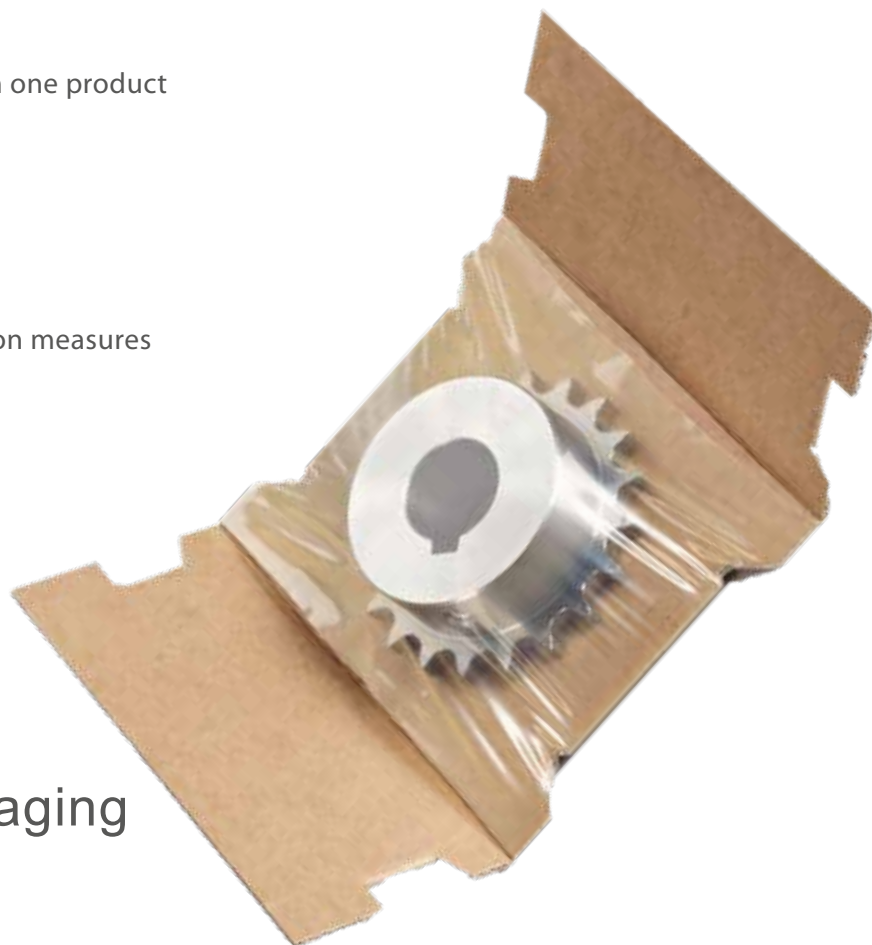
- Fully integrated packaging system for wide range of corrosion-sensitive products
- Up to two years temporary dry corrosion protection
- With VCI stretch film

Advantages

- Safe transport and corrosion protection in one product
- Fast packing times
- Reduced variety of packaging materials.
- Smaller storage volumes

Customer benefits

- No need for additional corrosion protection measures
- Proven Emba-Flex® packaging system
- Extensive cost savings
- More storage area



VCI-retention packaging
for corrosion-sensitive
metal products



VCI-retention packaging

the corrosion protection solution

The technology

- The special folding mechanism ensures that the VCI stretch film fixes your product firmly to the corrugated board and therefore prevents slipping.
- The highly flexible yet practically non-tear film clings perfectly to the various product contours.
- The corrosion inhibitors on the VCI stretch film create a fine, vaporous corrosion protection in the sealed packing and envelop the product in a uniform absorption film.
- After opening the package the inhibitors evaporate without leaving any residue, so that it is not necessary to clean the product.

Main features

- Special VCI stretch film – developed in conjunction with EXCOR® Korrosionsforschung GmbH, Dresden
- Corrosion-protection properties in accordance with TL 8135-0043, Stage 3
- Reliable protection for various corrosion-sensitive metal products and contours
- Designed for ferrous metals, chrome, nickel, aluminium alloys with silicon, partially galvanised steels, GGL and GGG cast iron - Other VCI film types available on request
- Lasts up to two years
- Reduces packaging variety by up to 90%
- Lowers process costs (procurement, storage, shipping, cleaning)
- Re-usable
- Economic due to standard range (no tooling costs)

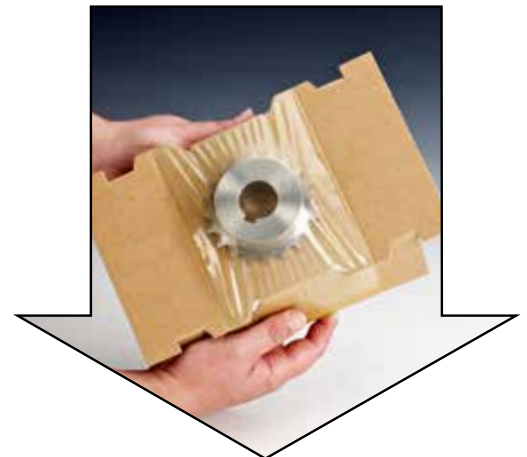
Already proven / existing packaging solutions:

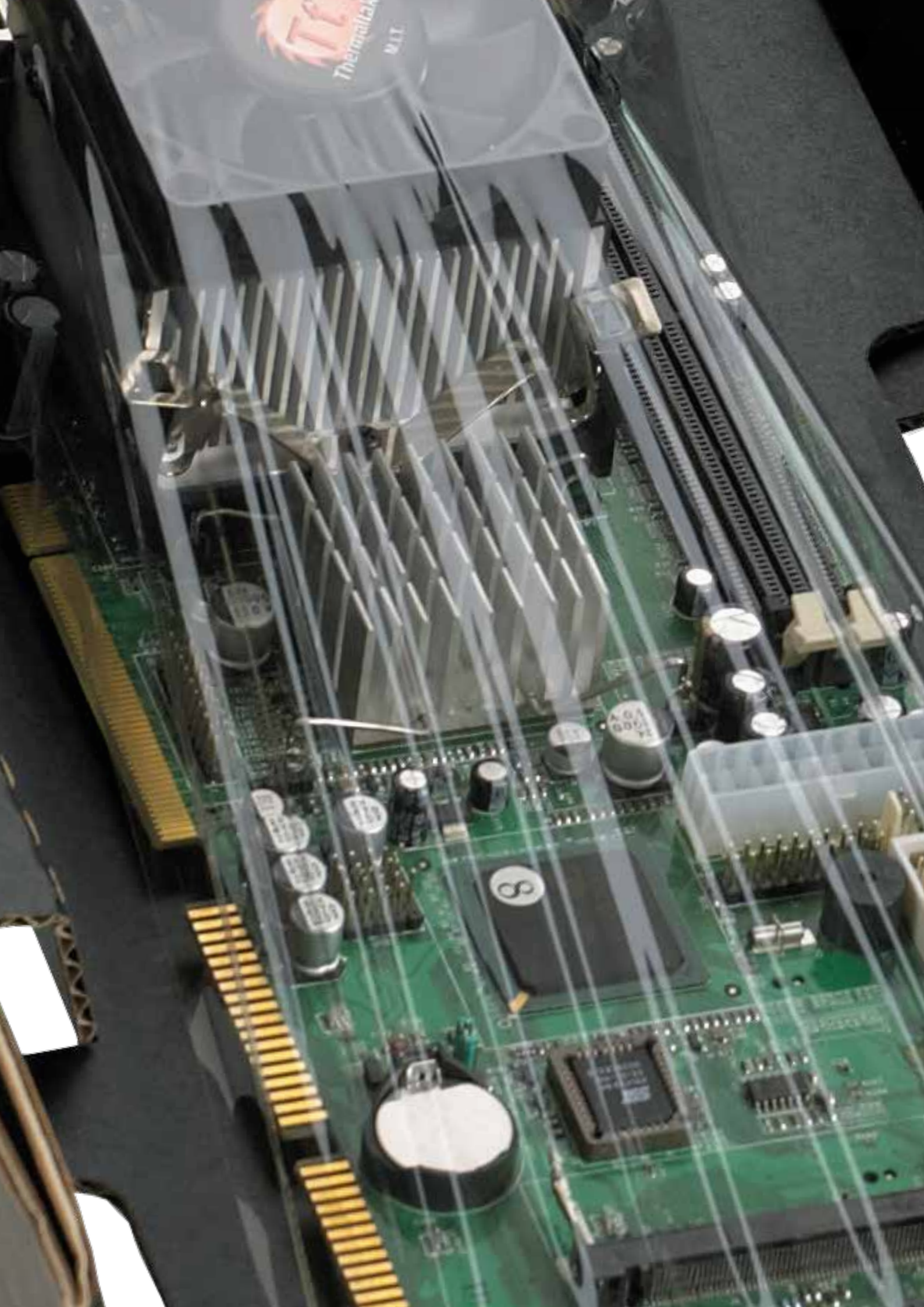
All standard sizes can be fabricated with VCI stretch film.

We also develop customised packaging solutions suited to your products.

The cardboard is also available with coated VCI.

We will provide the optimum solution. Just contact us!
We look forward to receiving your inquiry.





fits perfectly
fast simple packaging
economical
high degree of protection
SPECIAL PACKAGING
consumer electronics
Laptops / Tablet-PCs
TFT / LCD monitors
printed circuit boards
embedded systems

Special packaging

Consumer electronics



Application:

For typical consumer electronics products

Features:

Well-matched packaging systems for different fields of application

Advantages:

Superior shipping protection for high-quality consumer electronics equipment

The amount of packaging types is reduced



Special packaging

For Laptops from 10 to 17 inch

Special packaging for Laptops

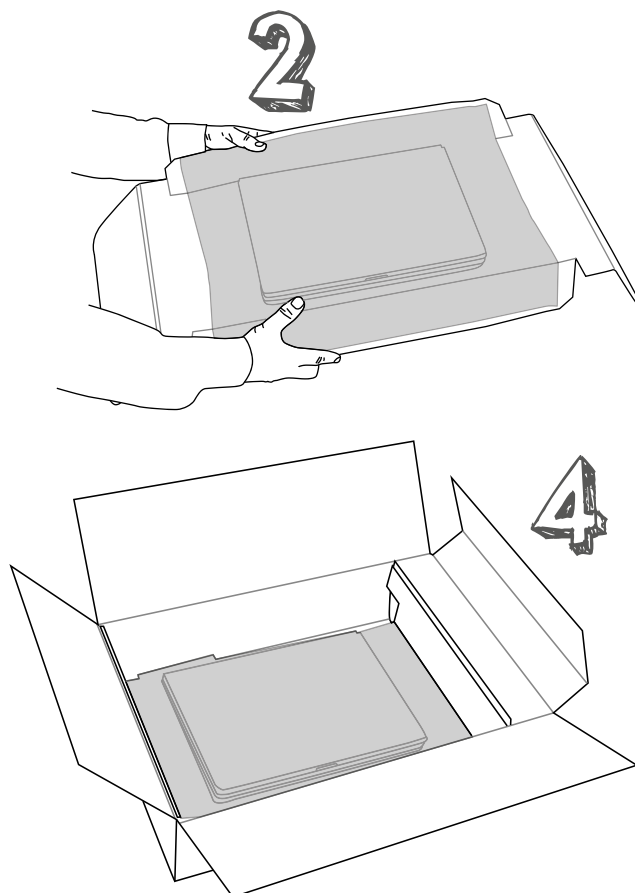
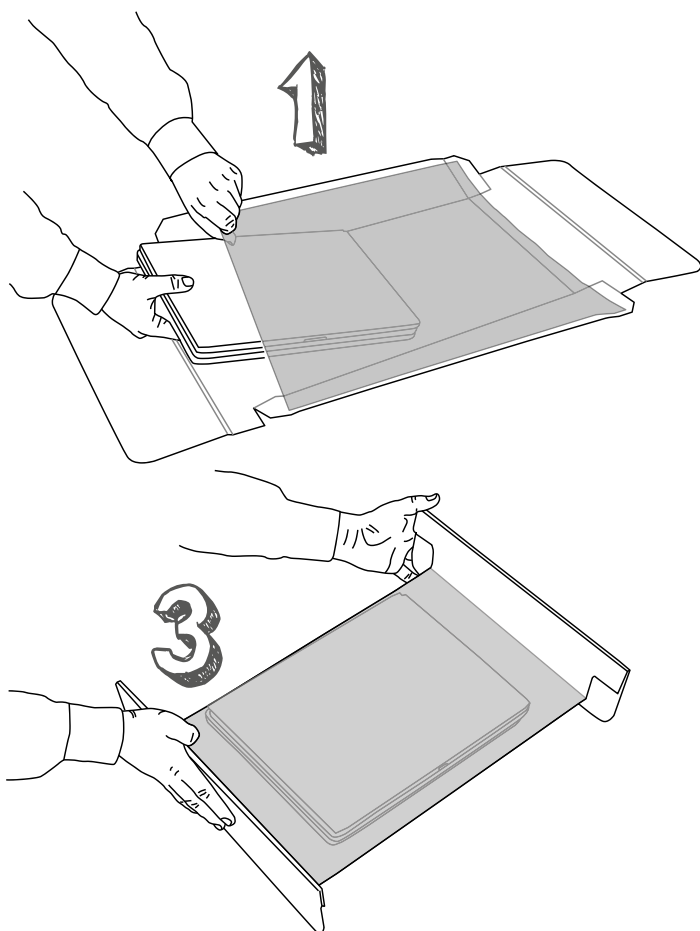
- high degree of protection for various laptops
- drop tested according to UPS and DIN ISO 2248 standards
- reduction of packaging diversity by up to 90%
- quick handling – easy packaging process
- with additional compartment for accessories
- reduction of process costs (procurement, storing, shipment)
- environment-friendly, can be disposed of with waste paper
- reusable
- professional appearance
- economical due to standard program (no tool costs)



The method

Select the matching standard size according to the dimensions of your laptop. Now, place the laptop on the corrugated board under the retention packaging film. Folding down the flaps on the sides stretches the film and the laptop is clamped onto the corrugated board format. Your device is now held in place

and secured against slipping out. Finally, put up the opposing flaps. Your laptop is safely enwrapped. The hollow bottom ensures that there is a gap between your laptop and the walls on all sides, providing additional protection against any external influences. All that's left to do is put it into the box!



Special packaging

For Laptops from 10 to 17 inch

Application examples

With this special packaging based on the Emba-FLEX® retention packaging, you have an all-purpose system for secure and cost effective shipping of your laptops.

In addition, devices with different dimensions and weights can be handed quickly and easily especially if many shipments are planned. Also product accessories are packed professionally and securely in accessory compartments.

In addition to our immediate delivery program listed in the table below we also offer existing special packaging as well as new developments according to your individual needs.



accessory compartment
for power supply

The immediate delivery program

Product to be shipped	Article code	Max. product weight	Page
Netbooks 13 Zoll	FL 312104 ECSZ	ca. 2,5 kg	104
Laptops bis 15 Zoll	FL 362604 ECSZ	ca. 3,5 kg	104
Laptops bis 17 Zoll	FL 473005 ECSZ	ca. 4,5 kg	104

Available in sets of 50 and more. Special sizes on request.



Special packaging

For Laptops from 13 to 17 inch



FL 312104

Maximum product size: **310 x 210 x 40 mm**

Product data

Overall transport box dimensions 438 x 268 x 96 mm
Fefco 0201 slotted-type box with top and bottom flaps and accessory compartment,
Quality B 1.20
Scope of delivery = Fixing insert 1 unit,
Transport box 1 unit

New!

Article code

Version

FL 312104 ECSZ

ECOLine 50, PE film 50 microns

You can also get the box without compartment.
Please use the following article-code:

FL 312104 ECS

ECOLine 50, PE film 50 microns

Applications: 13" laptops

Max. product weight: up to 2500 gr.



FL 362604

Maximum product size: **360 x 260 x 40 mm**

Product data

Overall transport box dimensions 504 x 318 x 100 mm
Fefco 0201 slotted-type box with top and bottom flaps and accessory compartment,
Quality B 1.40
Scope of delivery = Fixing insert 1 unit,
Transport box 1 unit

New!

Article code

Version

FL 362604 ECSZ

ECOLine 50, PE film 50 microns

You can also get the box without compartment.
Please use the following article-code:

FL 362604 ECS

ECOLine 50, PE film 50 microns

Applications: 15" laptops

Max. product weight: up to 3500 gr.



FL 473005

Maximum product size: **470 x 300 x 50 mm**

Product data

Overall transport box dimensions 646 x 366 x 112 mm
Fefco 0201 slotted-type box with top and bottom flaps and accessory compartment,
Quality B 1.40
Scope of delivery = Fixing insert 1 unit,
Transport box 1 unit

New!

Article code

Version

FL 473005 ECSZ

ECOLine 50, PE film 50 microns

You can also get the box without compartment.
Please use the following article-code:

FL 473005 ECS

ECOLine 80, PE film 80 microns

Applications: 17" laptops

Max. product weight: up to 4500 gr.

The indicated max. weights are approximate values and can vary depending on the product to be shipped.

Special packaging

For Tablet-PCs



FL 191203 Q

Maximum product size: **190 x 120 x 30 mm**

Product data

Overall dimensions 250 x 151 x 57 mm
Quality E 1.50
Scope of delivery = Retention packaging with attached transport box
1 unit

Article-Code	Version
FL 191203 Q	NORMLine 50, PU film 50 microns
FL 191203 ESQ	ESDLine 50, PU film ESD 50 microns
FL 191203 ECQ	ECOLine 50, PE film 50 microns

Applications: Festplatten, Kleingeräte, Platinen
Max. product weight: up to 1000 Gramm



FL 231502

Maximum product size: **230 x 150 x 20 mm**

Product data

Overall dimensions 338 x 211 x 47 mm
and accessory compartment,
Quality E1.40
Scope of delivery = Retention packaging with attached transport box
1 unit

including accessory compartment

Article-Code	Version
FL 231502 S	NORMLine 50, PU film 50 microns
FL 231502 ESDS	ESDLine 50, PU film ESD 50 microns
FL 231502 EC6S	ECOLine 50, PE film 50 microns

Applications: Tablet-PC's, plates
Max. product weight: up to 1000 Gramm



FL 241801 Q

Maximum product size: **240 x 180 x 10 mm**

Product data

Overall dimensions 342 x 230 x 44 mm
Quality E 1.50
Scope of delivery = Retention packaging with attached transport box
1 unit

Article-code	Version
FL 241801 Q	NORMLine 50, PU film 50 microns
FL 241801 ESQ	ESDLine 50, PU film ESD 50 microns
FL 241801 ECQ	ECOLine 80, PE film 80 microns

Applications: Tablet-PCs, plates
Max. product weight: up to 1500 Gramm

The indicated max. weights are approximate values and can vary depending on the product to be shipped.

Special packaging

For Smartphones



FL 150702 Q

Maximum product size: **150 x 70 x 20 mm**

Product data

Overall dimensions 200 x 107 x 49 mm

Quality E 1.50

Scope of delivery = Retention packaging with
attached transport box
1 unit

Article-code

Ausführung

FL 150702 Q

NORMLine 50, PU Folie 50 my

FL 150702 ESQ

ESDLine 50, PU Folie ESD 50 my

FL 150702 ECQ

ECOLine 50, PE Folie 50 my

Einsatzbereich: Smartphones, Platinen, flache Bauteile
Max. Produktgewicht: bis ca. 750 Gramm



FL 160801 Q

Maximum product size: **160 x 80 x 10 mm**

Product data

Overall dimensions 195 x 110 x 50 mm

Quality E 1.40

Scope of delivery = Retention packaging with
attached transport box
1 unit

New!

Article-code

Version

FL 160801 Q

NORMLine 50, PU film 50 microns

FL 160801 ESQ

ESDLine 50, PU film ESD 50 microns

FL 160801 ECQ

ECOLine 80, PE film 80 microns

Applications: Smartphones, circuit boards
Max. product weight: up to 750 Gramm

Monitore





Special packaging

For monitors from 17 to 27 inch

Monitors

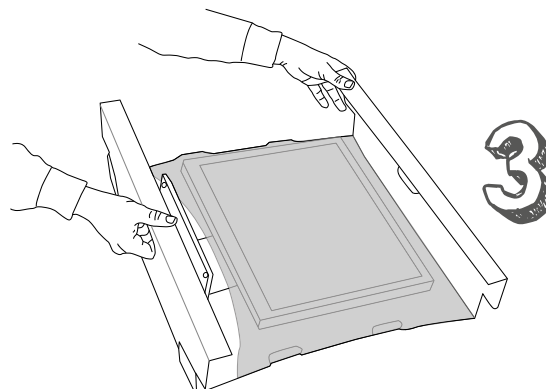
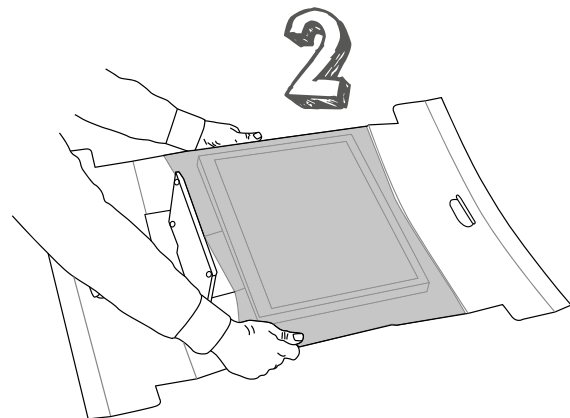
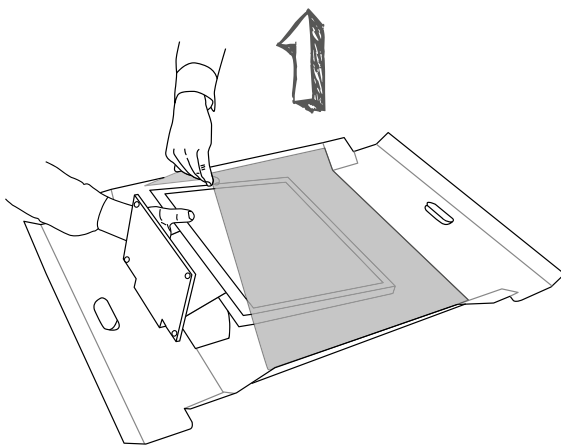
- high degree of protection for various monitors
- reduction of packaging diversity by up to 90%
- quick handling – easy packaging process
- hollow bottom provides storage space for accessories
- reduction of process costs (procurement, storing, shipment)
- environment-friendly, can be disposed of with waste paper
- reusable
- professional appearance
- economical due to standard program (no tool costs)



The method

Place the monitor on the corrugated board under the retention packaging film. The stand has enough space to fit through the universal opening. Folding down the flaps on the sides stretches the film and the monitor is clamped onto the corrugated board format. Your device is now held in place and secured against slipping out.

Finally, put up the opposing flaps. Your monitor is safely enveloped. The stand fits through the opening. Now place the bottom cushion in the box, then insert the retention packaging. The stand passes through the opening provided in the bottom cushion. All that's left to do is close the box!



Special packaging

For monitors from 17 to 27 inch

Application examples

With this special packaging based on the Emba-FLEX® retention packaging, you have an all-purpose system for secure and cost effective shipping of your monitors.

In addition, devices with different dimensions and weights can be handed quickly and easily especially if many shipments are planned. Your product accessories are stored securely and professionally in the hollow bottom. Also the stand fits securely in the opening provided for this purpose.

In addition to our immediate delivery program listed in the table below we also offer existing special packaging as well as new developments according to your individual needs.



The immediate delivery program

Product to be shipped	Article code	Max. product weight	Page
Monitor up to 19" (multiple-use)	SW 4646150 S **	ca. 10 kg	112
Monitor up to 27" (multiple-use)	FL 625816 TFTS	ca. 10 kg	112

* Available in sets of 50 and more (1 insert, 1 cushion, 1 box).

** Available in sets of 50 and more (2 cushions, 1 box).

Special sizes on request.



Special packaging

For monitors from 17 to 27 inch



SW 4646150

Product data

Overall transport box dimensions 610 x 568 x 328 mm
Fefco 0201 slotted-type box with top and bottom flaps
Quality BC 2.30
Scope of delivery = Membrane cushion 2 units,
Transport box 1 unit

Article code

Version

SW 4646150 S

NORMLine 100, PU film 100 microns

For multiple-use shipping

Maximum product size: **460 x 460 mm**

Applications: 17" to 19" monitors
Max. product weight: up to 10.0 kg



FL 625816 Tfts

Product data

Overall transport box dimensions 769 x 634 x 343 mm
Fefco 0201 slotted-type box with top and bottom flaps
Quality BC 2.30
Scope of delivery = Fixing insert 1 unit,
Bottom cushion 1 unit,
Transport box 1 unit

Article-Code

Version

FL 625816 Tfts

ECOLine 100, PE film 100 my

for one-way shipping

Maximum product size: **460 x 460 x 180 mm**

Application: **22" - 27"** Monitors
Max. product weight: up to 10 kg

The indicated max. weights are approximate values and can vary depending on the product to be shipped.

Doc Emba recommends:



Television





Your advantages:

- highest protection for large-size flat screens of up to 50 kg
- upright transport of screens
- quick handling – easy packaging process
- no expensive foam packaging or wooden boxes necessary
- reduction of process costs (procurement, storing, shipment)
- environment-friendly, can be disposed of with waste paper
- reusable
- economical due to standard program (no tooling costs)



This cushion solution has been designed for large-size flat screens and flat panels with or without a stand. It is tailor-made for 32 to 60-inch diagonal screens. Smaller screen diagonals on request.

The method

Our special packaging for screens is based on the suspension packaging Emba-Swing®. The corner suspension cushions can accommodate different display formats ranging from 32 to 60 inches. This version is especially useful in cases where a stand is pre-installed.

Due to the 4 cushions no stress is applied to any side of the screen. This system allows to pack screens in various dimensions. The outer box will be designed as an individual telescopic packaging.





Product data

Quality BC 2.30

Scope of delivery = Suspension cushion 1 unit

Article-Code	Version
SW 2206100 M	MAXILine 150, PU film 150 my

for televisions up to 60 inches

Area of application: Televisions, flat panels
Max. Product weight: up to approx. 50 kg

The indicated max. weights are approximate values and can vary depending on the product to be shipped.



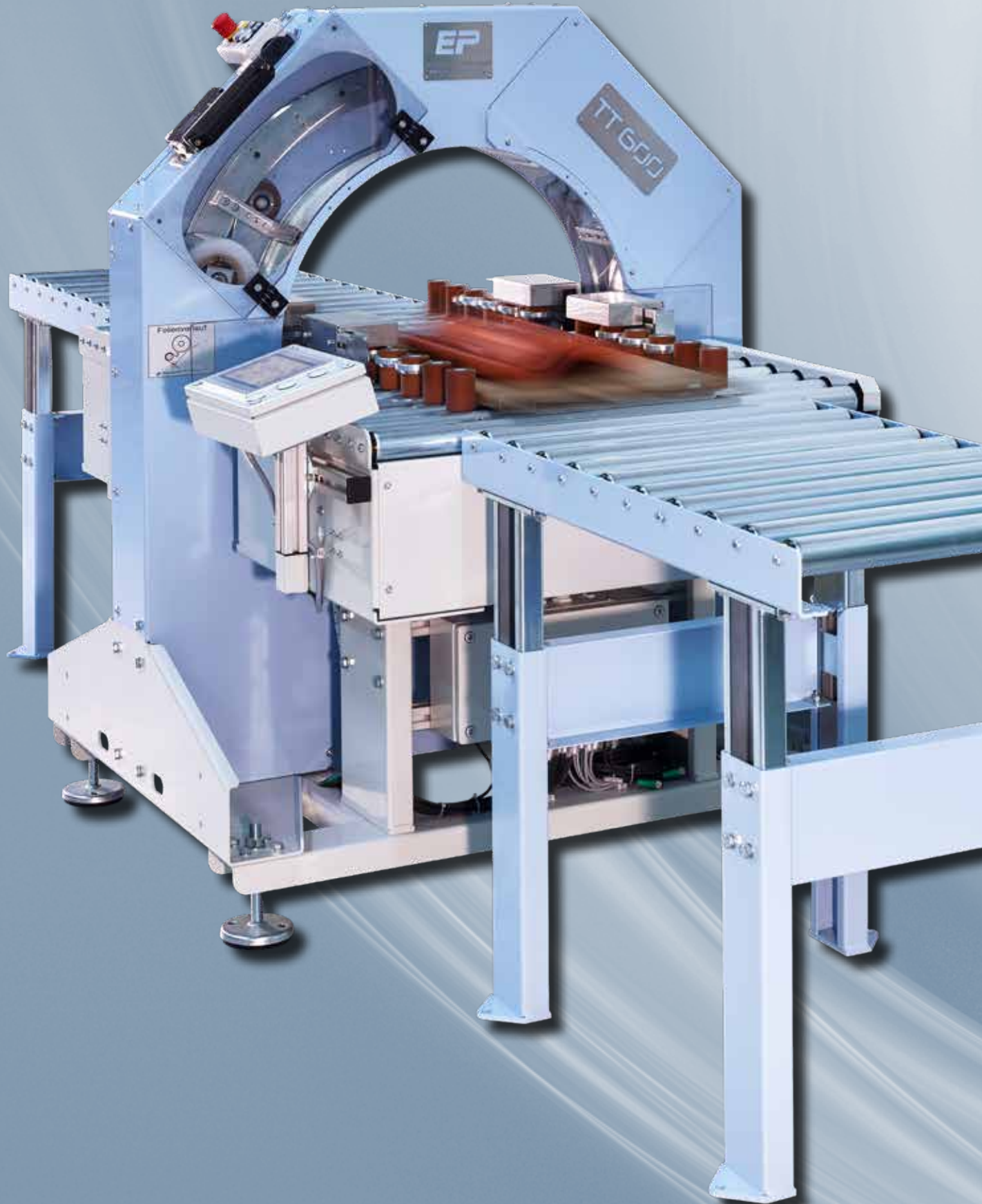
automatic
large packaging volumes
without defined order
precise process cost estimation

Emba-Protec®

for products with various
heights and weights
constant packaging speed
reducing amount of packaging

Emba-TrayTec®

The Automatic Packaging Solution



*If you simply want
to pack everything!*



Application:

For large packaging volumes.
For products with various heights and weights.

Features:

Automatic packaging without defined order.

Advantages:

Constant packaging speed.
Precise process cost estimation.
The amount of packaging types is reduced to a few sizes.

The Automatic Packaging Solution

Emba - TrayTec®

- significant degree of automation for constantly changing types of products, weight: 0.01 - 160 kg
- constant packaging speed
- standardization of packaging types
- significant reduction of packaging costs
- optimal product protection, even in case of packing units of different heights
- no additional filling materials necessary
- very high packaging quality and professional appearance
- very low power consumption, since no thermal processes necessary
- no set-up time
- silent operation of the machine
- small footprint of the machine
- can be seamlessly integrated into existing packaging lines
- immediately ready for use
- automatic tray dispenser available on request



Our technology

The product is placed onto a defined tray. The shape, the dimensions or the heights of the product do not matter. The important thing is that it fits the size of the provided shipping box.

The automatic feed is used to vertically wrap both - the tray and the product - with the special stretch film. The product is firmly clamped onto the corrugated board format and can be securely shipped in a box.



The Automatic Packaging Solution

This tray packaging machine ensures perfect product protection, high-speed packaging and low costs. This easy-to-operate machine offers maximum flexibility for small and large product lines. The packaging process still remains the same even for **constantly changing products** with **different heights and weights of up to 160 kg**. And the best of it : You reduce the amount of packaging sizes, storage space and time. Filling and cushioning materials are no longer required.

Typical shipped goods include gears, pumps, motors, gear wheels, drives, light- and heavy-weight replacement parts of all types, as well as sensitive machine components from the entire field of process measuring and control technology.

Application:

For large packaging volumes.

For products with various heights and weights.

Features:

Automatic packaging without any defined order.

Advantages:

Constant packaging speed.

Precise process calculation.

The amount of packaging types is reduced to a few sizes.

Also available with ESD and VCI film !



In order to protect your products from short-circuits due to electrostatic discharge we have developed a new film for the most demanding requirements. Antistatic film 10^8 to 10^{11} Ohm surface resistance.



For corrosion protection of your products. When the packaging is closed a fine anti-corrosive vapour builds up on the VCI stretch film. The vapour then covers the product evenly with an absorption film. Broadband effect for many metals and alloys.

The Concept

How does the concept work?

Our team develops the sizes you require based on your daily packaging tasks. Furthermore, the new standard program without tool costs can be used. Once the packages have been checked and found to be in perfect condition, we're ready to start.

You enter into a supply contract for the quantity you require. Then, Emba-Protec will supply you with the wrapping machine, including detailed instructions. All necessary packaging components (trays, film, shipping cartons) are supplied to you on call off. You only pay a fixed set price per packaging supplied. We, of course, will assist you with any queries and wishes for modification. This is part of our customer service.

Your advantages

- **Packaging sizes are standardised and immediately available**
- **No tool costs**
- **Significant reduction of packaging times / costs**
- **Packaging in random sequence is possible**
- **For products weighing between 0.1 and 160 kg !**
- **No other filling and cushioning materials are required**
- **Best possible product protection during shipping**
- **Reduction of storage costs due to small on-call batches**

Find the standard size matching your requirements on the following pages. We look forward to advising you!

Example motor



Example 2-DIN radio



Example display



Example head lamp



Example steering shaft



Example pump



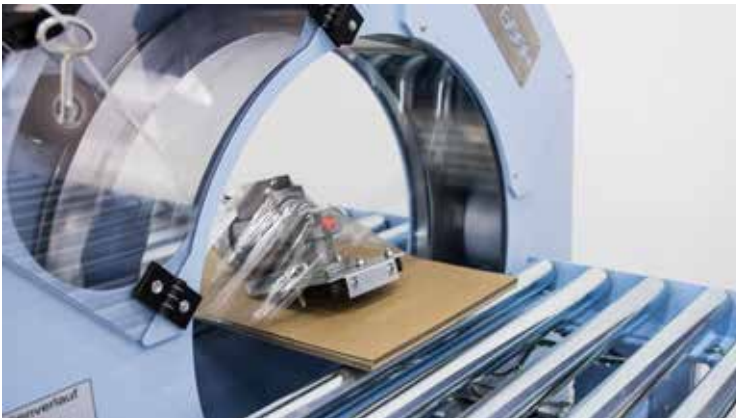
The Machine Versions

semi-automatic system



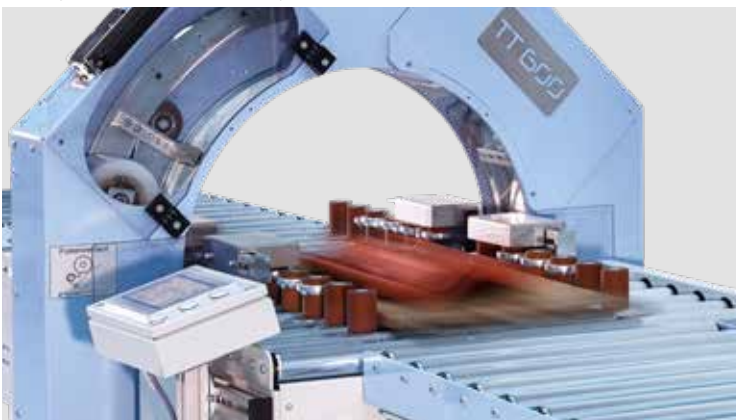
A semi-automatic system with easy handling. For small quantities and few placement options. This system allows for individual wrapping. And your products will always reach their destination safely.

hybrid version



The hybrid machine covers the gap between the semi-automatic and the fully automatic machine solution, in terms of price and technique.

fully automatic system



The fully automatic system for high throughput quantities. Up to 6 packing operations per minute are possible! Equipped with many features, e.g. automatic tray detection or a variety of different wrapping programs.

The Standard Program



Maximum product size: **160 x 130 x 70 mm**

Product data

Overall transport box dimensions 210 x 170 x 97 mm
Fefco 0713 with crash-lock base and closing lid
Quality E 1.40
Scope of delivery = 1x tray
1x outer box
film in rolls

Article-Code	Machine Version
TT 161307 M60	winding ring 600, semi-automatic
TT 161307 H60	winding ring 600, hybrid version
TT 161307 A60	winding ring 600, fully automatic



Maximum product size: **300 x 200 x 100 mm**

Product data

Overall transport box dimensions 344 x 251 x 148 mm
Fefco 0713 with crash-lock base and closing lid
Quality C 1.40
Scope of delivery = 1x tray
1x outer box
film in rolls

Article-Code	Machine Version
TT 302010 M60	winding ring 600, semi-automatic
TT 302010 H60	winding ring 600, hybrid version
TT 302010 A60	winding ring 600, fully automatic



Maximum product size: **350 x 240 x 70 mm**

Product data

Overall transport box dimensions 400 x 300 x 116 mm
Fefco 0201 slotted-type box with top and bottom flaps
Quality C 1.30
Scope of delivery = 1x tray
1x outer box
film in rolls

Article-Code	Machine Version
TT 352407 M60	winding ring 600, semi-automatic
TT 352407 H60	winding ring 600, hybrid version
TT 352407 A60	winding ring 600, fully automatic

Also available with ESD and VCI film !

Special sizes and other machine formats are available on request. We look forward to advising you.

The Standard Program



TT 352417

Maximum product size: **350 x 240 x 170 mm**

Product data

Overall transport box dimensions 400 x 300 x 224 mm
Fefco 0201 slotted-type box with top and bottom flaps
Quality C 1.30
Scope of delivery = 1x tray
1x outer box
film in rolls

Article-Code	Machine Version
TT 352417 M60	winding ring 600, semi-automatic
TT 352417 H60	winding ring 600, hybrid version
TT 352417 A60	winding ring 600, fully automatic



TT 533216

Maximum product size: **530 x 320 x 160 mm**

Product data

Overall transport box dimensions 600 x 400 x 238 mm
Fefco 0201 slotted-type box with top and bottom flaps and additional crease of 100 mm, Quality BC 2.40
Scope of delivery = 1x tray, 1x outer box
film in rolls

Article-Code	Machine Version
TT 533216 M60	winding ring 600, semi-automatic
TT 533216 H60	winding ring 600, hybrid version
TT 533216 A60	winding ring 600, fully automatic
TT 5332 V	Reinforcing die cut for heavy products (to be placed on the tray before wrapping)



TT 533226

Maximum product size: **530 x 320 x 260 mm**

Product data

Overall transport box dimensions 600 x 400 x 338 mm
Fefco 0201 slotted-type box with top and bottom flaps and additional crease of 100 mm, Quality BC 2.40
Scope of delivery = 1x tray, 1x outer box
film in rolls

Article-Code	Machine Version
TT 533226 M60	winding ring 600, semi-automatic
TT 533226 H60	winding ring 600, hybrid version
TT 533226 A60	winding ring 600, fully automatic
TT 5332 V	Reinforcing die cut for heavy products (to be placed on the tray before wrapping)

Also available with ESD and VCI film !



Emba-TrayTec® Plus
Protective Packaging meets high speed



Emba-TrayTec Plus

European patent number EP 3 708 518

Until now, shipping sensitive products involved a great deal of effort. There were two key prerequisites to making sensitive, high-quality products ready for shipment: **time** and **costly packaging material**. Emba-Protec has created an innovative packaging solution that solves **both these problems!** You'll already accomplish a great deal by using our cushion-based suspension packaging. **Perfect protection at reasonable costs.** But using and arranging two cushions is time-consuming when you're dealing with larger volumes. Now you can combine the advantages of the Emba-Protec's cushion-based suspension packaging with speedy automation. Emba-TrayTec Plus: one cushion, one packaging process, in far less time. You benefit from all the advantages of the familiar Emba-Swing suspension packaging and the Emba-TrayTec machine system. **You save both time and money, considerably cutting your process costs while you're at it.**



Prepare the tray ...



Put on the product ...



And wrap it ready for shipment !

Costs:

- 60% cheaper than comparable foam solutions
- 40% cheaper than suspension cushions (you save a cushion)
- Takes up 90% less storage space compared to foam solutions
- 50% faster packaging process

Environment:

- Single-material solution (film content less than 5%)
- Making it the most eco-friendly packaging
- Can be disposed of together with waste paper
- Eliminates all foam packaging that's harmful to the environment. Absolutely all of it!

Protection:

- Combines the advantages of two tried-and-tested systems
- Also packages products with complicated contours
- Unbeatable protection – even of products that are very shock-sensitive
- Product placed on a cushion for 'floating' transport

Speed:

- Faster than ever before !

**Suspension cushion
at the base,
fixation from the top**

=

100% Protection



Buzz n' Pack[®]

Packing on command





The fastest packaging
we know!

Application:

Decentralized packaging

E-Commerce

Designed for logistics and contract packaging operations

Features:

Machine packaging at the touch of a button

High protection and cushioning function

Advantages:

Consistent high packing speeds

Always the same packing process

Consistent packaging costs

Easy to use machine

Packing on command

The advantages at a glance:

- Up to 4 packaging cycles per minute (!)
- 4 standard sizes covering everything
- Adjustable between sizes in seconds
- No programming involved
- Always consistent packing process, no matter who is packing
- No fluctuations in consumption
- Employee training takes 5 minutes
- Clearly safest product protection due to firm fixation
- Significantly less packaging waste at the end customer
- Dust-free shipping
- Use of recycle film with up to 65% content possible
- Immediately ready for use, no thermal energy heavy current or compressed air is necessary
- Small compact machine that fits everywhere



The method:

The tray is adjusted on 4 sizes with a hand lever which is in close proximity.

The appropriate tray (S, M, L, XL) is put placed on the machine, the holder fixes the tray automatically. Then the goods to be shipped (several are also possible) are placed on the tray. By pressing a button (buzzer) the packing process is started. Simultaneously the employee can erect the shipping carton or prepare shipping documents. Immediately afterwards, the tray is wrapped and ready to be placed in the shipping carton.

With this machine system, everything is child's play and perfectly packed. The costs are always the same and included in the tray price. The machine system is provided for you, foil included. You have no fluctuations due to more or less filling material. Goods up to 10 kg are no problem. Due to perfectly designed outer cartons and reinforcements, shipping is fast and safe.



Buzz n'Pack 600er



Buzz n'Pack 400er



Place tray

The tray is placed up to stop.
After that the tray locks automatically.



Place product

The goods to be packed are placed on the
positioned tray (even more than one product
is possible).



Press buzzer

The buzzer starts the packing process. The goods
are wrapped tightly with film (of course with
recycled content film) onto the tray. During the
packaging process, the user can prepare other
activities (e.g. assemble the outer carton). The
buzzer housing is magnetic and can be placed
anywhere.



into the box !

Your product is ready for dispatch.

The Standard Programm



BNP S

Maximum product size: **200 x 160 x 70 mm**

Product data S

Overall transport box dimensions 246 x 190 x 112 mm
Fefco 0703 with crash-lock base and closing lid
with self-adhesive strip and tear strip
or as folding box Fefco 0201
Quality B 1.20

Article-Code	Packing type
BNPS	Tray S
BNPSV	Reinforcement
UK703BNPS	Outer carton with quick release fastener F0703
UK201BNPS	Folding box outer carton F0201



BNP M

Maximum product size: **270 x 200 x 80 mm**

Product data M

Overall transport box dimensions 316 x 236 x 122 mm
Fefco 0703 with crash-lock base and closing lid
with self-adhesive strip and tear strip
or as folding box Fefco 0201
Quality B 1.30

Article-Code	Packing type
BNPM	Tray M
BNPMV	Reinforcement
UK703BNPM	Outer carton with quick release fastener F0703
UK201BNPM	Folding box outer carton F0201



BNP L

Maximum product size: **350 x 230 x 220 mm**

Product data L

Overall transport box dimensions 406 x 266 x 262 mm
Fefco 0703 with crash-lock base and closing lid
with self-adhesive strip and tear strip
or as folding box Fefco 0201
Quality B 1.40

Article-Code	Packing type
BNPL	Tray L
BNPLV	Reinforcement
UK703BNPL	Outer carton with quick release fastener F0703
UK201BNPL	Folding box outer carton F0201



BNP XL

Maximum product size: **530 x 350 x 250 mm**

Product data XL

Overall transport box dimensions 602 x 402 x 303 mm
Fefco 0703 with crash-lock base and closing lid
with self-adhesive strip and tear strip
or as folding box Fefco 0201
Quality EB 2.30

Article-Code	Packing type
BNPXL	Tray XL
BNPXLV	Reinforcement
UK703BNPXL	Outer carton with quick release fastener F0703
UK201BNPXL	Folding box outer carton F0201

And last but not least:
boxes, boxes, boxes ... !



off-the-shelf

You only need transport boxes for the dispatch?

Article code	Quality	Inner dimensions (mm) Length x Width x Height	Out dimensions (mm) Length x Width x Height
UK201BNPS	B 1.20	240 x 184 x 100	245 x 189 x 110
UK703BNPS	B 1.20	240 x 184 x 100	245 x 189 x 112
UK201BNPM	B 1.20	310 x 230 x 110	315 x 235 x 120
UK703BNPM	B 1.20	310 x 230 x 110	315 x 235 x 122
UK201BNPL	B 1.40	400 x 260 x 250	405 x 265 x 260
UK703BNPL	B 1.40	400 x 260 x 250	405 x 265 x 262
UK201BNPXL	EB 2.30	593 x 393 x 285	600 x 400 x 299
UK703BNPXL	EB 2.30	593 x 393 x 285	600 x 400 x 302
UK EV 271206**	E 1.30	345 x 150 x 100	349 x 154 x 108
UK EV 271802*	B 1.30	305 x 270 x 65	330 x 280 x 71
UK EV 291507**	E 1.30	345 x 175 x 120	349 x 179 x 128
UK EV 311209**	B 1.30	350 x 220 x 140	356 x 226 x 152
UK EV 392804*	B 1.40	440 x 400 x 70	465 x 410 x 76
UK EV 402512**	B 1.40	460 x 317 x 180	466 x 326 x 192
UK EV 453105*	B 1.40	500 x 420 x 85	525 x 430 x 91
UK FL 101004	E 1.20	140 x 115 x 60	145 x 120 x 67
UK FL 120804	E 1.40	205 x 165 x 90	210 x 170 x 97
UK FL 120905	B 1.30	151 x 125 x 71	158 x 132 x 82
UK FL 140804	E 1.20	165 x 111 x 60	170 x 116 x 67
UK FL 141004	B 1.30	170 x 170 x 73	176 x 176 x 84
UK FL 151504	B 1.30	192 x 176 x 75	199 x 183 x 86
UK FL 151506	B 1.30	192 x 176 x 98	199 x 183 x 109
UK FL 161002*	E 1.2	230 x 140 x 42	246 x 146 x 46
UK FL 161204*	E 1.20	175 x 149 x 47	182 x 165 x 52
UK FL 161205*	E 1.20	175 x 149 x 72	182 x 165 x 75
UK FL 161210	B 1.30	194 x 160 x 128	200 x 167 x 139
UK FL 180906	B 1.30	189 x 108 x 85	196 x 115 x 96
UK FL 181004	E 1.20	213 x 143 x 69	218 x 148 x 76
UK FL 181006	B 1.30	209 x 151 x 96	214 x 156 x 109
UK FL 191606	B 1.30	218 x 218 x 93	224 x 224 x 104
UK FL 202006	B 1.30	242 x 228 x 88	249 x 235 x 99
UK FL 202008	B 1.30	242 x 228 x 108	249 x 235 x 119
UK FL 221506	B 1.30	248 x 192 x 88	255 x 199 x 99
UK FL 221508	B 1.30	248 x 192 x 108	255 x 199 x 119
UK FL 231502*	E 1.40	324 x 205 x 43	338 x 211 x 47
UK FL 231806	B 1.30	297 x 205 x 76	300 x 210 x 89
UK FL 241004	B 1.30	300 x 147 x 82	306 x 153 x 92
UK FL 252506	C 1.40	292 x 286 x 95	300 x 295 x 108
UK FL 252508	C 1.40	292 x 286 x 125	300 x 295 x 138
UK FL 281607	B 1.30	330 x 227 x 108	335 x 232 x 121
UK FL 281812**	C 1.30	316 x 288 x 162	325 x 297 x 178
UK FL 292606	C1.30	422 x 330 x 92	452 x 339 x 98
UK FL 300905*	B 1.30	330 x 132 x 64	352 x 143 x 72
UK FL 302007	C 1.40	335 x 242 x 105	344 x 251 x 118
UK FL 302010	C 1.40	335 x 242 x 135	344 x 251 x 148

*Fefco 0427, **Fefco 0201

Pick what you need from this large overview:

Article code	Quality	Inner dimensions (mm) Length x Width x Height	Out dimensions (mm) Length x Width x Height
UK FL 302214**	C 1.30	340 x 330 x 184	349 x 339 x 200
UK FL 303008	C 1.40	392 x 335 x 113	400 x 343 x 126
UK FL 312104	B 1.20	370 x 262 x 84	376 x 268 x 96
UK FL 342012**	C 1.30	380 x 263 x 146	389 x 272 x 162
UK FL 342505	BC 2.30	400 x 332 x 110	414 x 346 x 138
UK FL 352008	C 1.40	385 x 283 x 110	394 x 292 x 123
UK FL 352504*	C 1.40	395 x 302 x 105	435 x 315 x 115
UK FL 362410**	C 1.30	425 x 295 x 155	434 x 304 x 171
UK FL 362604	B 1.40	430 x 312 x 88	436 x 318 x 100
UK FL 382508**	C 1.30	440 x 326 x 125	448 x 334 x 140
UK FL 402010	B 1.40	470 x 265 x 143	477 x 272 x 154
UK FL 402510**	BC 2.30	532 x 320 x 142	547 x 335 x 170
UK FL 403005	BC 2.30	542 x 407 x 140	556 x 421 x 168
UK FL 403006*	B 1.40	530 x 328 x 80	552 x 339 x 88
UK FL 403211**	BC 2.30	510 x 365 x 175	538 x 380 x 190
UK FL 473005	B 1.40	560 x 360 x 100	566 x 366 x 112
UK FL 503215**	BC 2.30	600 x 390 x 200	615 x 395 x 228
UK FL 504010**	BC 2.30	620 x 465 x 160	635 x 480 x 188
UK FL 512305	B 1.40	562 x 300 x 82	592 x 309 x 88
UK FL 513005	B 1.40	562 x 375 x 82	592 x 384 x 88
UK SW 1207**	B 1.30	202 x 152 x 104	208 x 158 x 117
UK SW 1313**	C 1.30	195 x 195 x 90	200 x 200 x 104
SN 161003	E 1.20	235 x 186 x 75	242 x 172 x 78
UK SW 1717**	B 1.30	230 x 220 x 218	236 x 226 x 230
UK SW 191560**	B 1.30	305 x 250 x 175	311 x 256 x 187
UK SW 2010**	C 1.30	278 x 176 x 176	287 x 185 x 190
UK SW 2011**	C 1.30	293 x 193 x 136	300 x 200 x 150
UK SW 2415**	C 1.30	315 x 225 x 178	324 x 234 x 194
UK SW 2518**	C 1.30	332 x 295 x 234	340 x 300 x 246
UK SW 2525**	C 1.30	326 x 326 x 202	334 x 334 x 218
UK SW 2818**	C 1.30	356 x 239 x 240	364 x 247 x 256
UK SW 2823**	BC 2.30	408 x 320 x 260	422 x 334 x 288
UK SW 2927**	BC 2.30	458 x 425 x 370	472 x 439 x 398
SN 300760	B 1.40	146 x 136 x 368	152 x 142 x 380
UK SW 3020**	BC 2.20	389 x 289 x 242	400 x 300 x 270
UK SW 3030**	BC 2.30	372 x 372 x 310	387 x 387 x 338
UK SW 3433**	BC 2.30	492 x 472 x 302	506 x 486 x 330
UK SW 4030**	BC 2.30	489 x 389 x 302	500 x 400 x 330
UK SW 454490**	BC 2.40	583 x 520 x 200	597 x 534 x 228
UK SW 4544180**	BC 2.40	583 x 520 x 570	597 x 534 x 598
UK SW 4646**	BC 2.30	596 x 554 x 300	610 x 568 x 328
UK SW 5030**	BC 2.40	630 x 390 x 455	644 x 404 x 483
UK SW 5040**	BC 2.40	634 x 490 x 530	648 x 504 x 558
UK SW 5050**	BC 2.50	634 x 590 x 530	648 x 604 x 558

Module dimensions for pallets!

Module dimensions for pallets!

Module dimensions for pallets!

Module dimensions for pallets!

Module dimensions for pallets!

*Fefco 0427, **Fefco 0201, Some „UK SW“ - boxes have extra grooves for different heights.

You can send us a non-binding order using the following questionnaire.
Or go to www.emba-protec.de and do it [online!](#)

Company	<input type="text"/>	Contact	<input type="text"/>
Street	<input type="text"/>	Department/Position	<input type="text"/>
ZIP/Postc.	<input type="text"/>	Telephone	<input type="text"/>
Town	<input type="text"/>	Telefax	<input type="text"/>
Branch	<input type="text"/>	E-Mail	<input type="text"/>

What do you want to pack?

Product name (working title)

Product type

Weight in kgs

Min. Max.

Min.size x x mm

Max. size x x L/W/H

If ordering more than one product, please
use the "Max" fields.

How many items do you want to pack?

per day per week per month per year

How long is the present packaging time per unit? labour units in minutes

What kind of packaging do you use at the moment?

What is your usual shipping method?

☐ Individually packaged ☐ Bulk good on pallet ☐ both

What are your aims?

- | | |
|---|---|
| <input type="checkbox"/> Improved protection | <input type="checkbox"/> Reduced volume |
| <input type="checkbox"/> Reduced diversity | <input type="checkbox"/> Increased reusability |
| <input type="checkbox"/> Reduced packaging time | <input type="checkbox"/> Environment-friendlier packaging |
| <input type="checkbox"/> Improved appearance/design | <input type="checkbox"/> Reduced costs |
| <input type="checkbox"/> Savings in extra packing materials | <input type="checkbox"/> |

Do you want a drop test?

- ☐ no ☐ yes which

Which interests you more?

- ☐ Individual solution ☐ Using standard sizes wherever possible

Priority

- ☐ 1 week ☐ 2 weeks ☐ 4 weeks ☐ Desired deadline



Doc Emba

The explaining engineer

**Doc Emba guides you through
the exciting world of packaging
of Emba-Protec.**

**Stay curious !
We will keep you up to date !**

Our digital channels:

For general messages :
For suggestions and requests
for improvements :
For your orders:
For general information
about Emba-Protec

info@emba-protec.de

geschaeftsleitung@emba-protec.de
order@emba-protec.de

www.emba-protec.de

